



Spring Fling



Bull and Female Sale
Saturday, April 23, 2011 • Noon
Springfield, Missouri

**Official Publication
of the
Missouri
Cattlemen's
Association**

Get on the M.C.A. TEAM TODAY!

The MISSOURI CATTLEMEN'S ASSOCIATION is a not-for-profit, grassroots, member-driven organization focused on protection and promotion of the "economic, educational, political and social interest of the Missouri beef cattle industry." Join with us and have a voice in YOUR INDUSTRY.

**For Membership
Information contact:**

M.C.A Headquarters
2306 Bluff Creek Drive, #100
Columbia, MO 65201

Ph: 573-499-9162

Fax: 573-499-9167

Jeff Windett, Executive VP
Extension 230

*Check out MCA's Source and
Age Verification Program:
www.mocattle.com*

**For Your Next Sale
Call or Write:**

**Larry Atzenweiler,
Advertising Manager**

**Andy Atzenweiler,
Editor and Production Manager**

Ring Service Available

**P.O. Box 480977
Kansas City, MO 64148**

Office: 816-471-0200

Fax: 816-471-0220

E-mail: mobeef@sbcglobal.net

Join MCA and receive Missouri Beef Cattleman FREE!

Missouri Red Angus Association, Inc.
Spring Fling
Bull & Female Sale

April 23, 2011 • 12 p.m.

(Bulls will sell at 1 p.m.)

Springfield Livestock Marketing Center, LLC
Springfield, Missouri (North of I-44 at exit #70)

Sale Day Phones:

Sale Barn: 417-869-9500 Steven Rogers: 660-654-1592
Larry Ellison: 417-838-8772 Aaron Crosby: 417-300-1817

RAAA Representative: Clint Berry: 417-844-1009

Auctioneer: Kyle Gilchrist, Cell: 641-919-1077

Ringman: Don Birk

Schedule of Events:

Friday, April 22

- 2 p.m. Cattle in place for viewing
- 5 p.m. Consignors Meeting
- 6 p.m. Missouri Red Angus Annual Meeting at Golden Corral –
2734 N. Kansas Expressway, Springfield, Mo.

Saturday, April 23

- 9 a.m. Cattle Viewing
 - Coffee & Donuts provided by Bass & Smith Feeds
 - Silent Auction to benefit MORA Programs
- 12 p.m. Sale begins
- 1 p.m. Bulls will sell

Saturday lunch will be available in sale barn café.

Sale Headquarters:

Ramada Inn Limited – 417-799-2200
4445 W. Chestnut Expressway – 1/2 mile East of I-44 (exit 72)
Be sure to mention Missouri Red Angus Assn. for special rate.

Catalog by: Jane Adolph, Mt. Carroll, IL • 815-244-5456

*Special thanks to all volunteers and consignors who have
contributed to putting on this event!*



View this catalog online at
www.missouriredangus.com



Welcome to the “Spring Fling” Red Angus Bull and Female Sale!

Working through this catalog, I trust that you will be as impressed with the cattle that our consignors are offering as I am. Not only are there some of the most exciting, proven genetics in the breed, but the variety and quality of cattle runs deep. This set of progressive breeders are offering high quality cattle that are adapted to our Midwest forages and will be ready to work for you.

If you are looking for your next herd bull, spring pairs, open heifers, fall bred, embryos or the best Red Angus semen available, this is the event to attend. In an effort to make purchasing decisions easier for our bull buyers, the bulls have been floored in the catalog by the consignors, so you'll know what to expect when you look over this offering of rugged, efficient bulls. I expect this to be the best set of bulls we have ever offered!

Red Angus-influenced cattle continue to top markets and excel in production traits that every cattleman strives for – reproductive soundness, calving ease, feed efficiency, and growth. The cattle in this sale will not disappoint. I encourage you to look over the following pages closely; you'll find many gems including some of the most dependable cow-lines in the breed. Don't miss out on improving your genetic base with Red Angus!

Please give the consignors a call if you have specific questions regarding their cattle. I'll be happy to assist you in anyway I can. I look forward to seeing you April 23rd!

Sincerely,

Steven Rogers

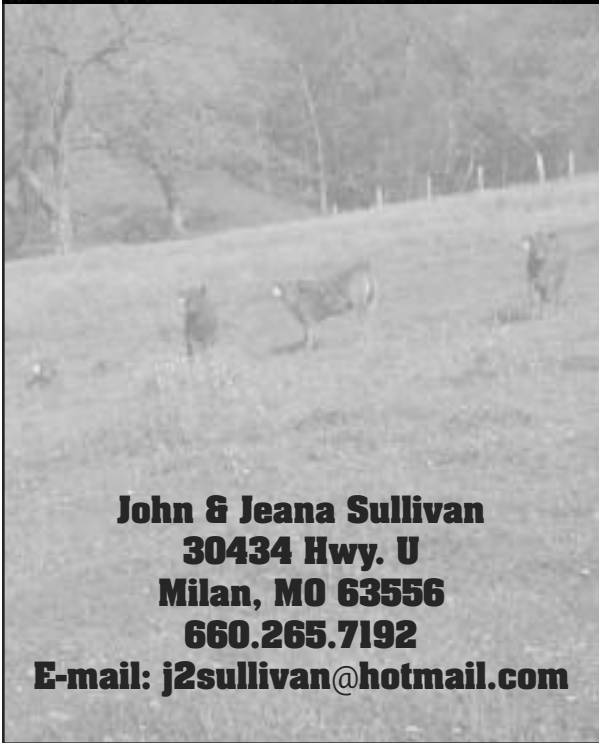
President, Missouri Red Angus Association

Harmony Hills Red Angus

Red Angus Replacement Females and Bulls
and
Red Angus/Simmental Cross "Profit-Maker" Bulls

"A Small Herd with Powerful Genetics"

Larry & Merrilyn Ellison
Fair Grove, MO
417-838-8772 or 417-759-9125
www.harmonyhillsredangus.com



John & Jeana Sullivan
30434 Hwy. U
Milan, MO 63556
660.265.7192
E-mail: j2sullivan@hotmail.com

Semen Donations

Semen will sell at noon on sale day and proceeds will benefit the Missouri Red Angus Association. Thanks to all these donors! It is the buyer's responsibility to make arrangements for semen pick-up, unless it is available sale day.

Donated by: Majestic Meadows/The Moxley Family, West Friendship, Md.

Lot A – Majestic Lightning 717 SGMR (#1155775)

BW 3.1; WW 55; YW 100; Milk 18; TM 45; Marb. 0.14; REA -0.14
The 2009 National Western Grand Champion and 2008 NAILE Grand Champion. His first calves have been weaned...their performance and style are fantastic.

Lot B – Three Aces Sideways (#1324131)

BW -0.4; WW 26; YW 53; Milk 16; TM 29; Marb -0.01; REA -0.30
An exciting young bull with a great genetic package combined with tremendous phenotype. His first calves are on the ground and looking great.

Donated by Harmony Hills, Fair Grove, Mo.

Lot C – 5L Norseman King 2291 (#806707)

BW 0.7; WW 28; YW 66; Milk 14; TM 28; Marb 0.20; REA 0.75
The carcass giant for many years – his calves are still the breed favorites for overall performance with natural thickness and easy fleshing ability.

Lot D – Messmer Packer S008 (#1109534)

BW -1.3; WW 44; YW 81; Milk 13; TM 35; Marb. 0.35; REA 0.38
One of the most highly used bulls in 2010. His balanced EPDs and power packed pedigree deliver calves that are truly exceptional.

Lot E – HXC Jackhammer 8800U (#1269438)

BW -0.7; WW 62; YW 108; Milk 3; TM 34; Marb. 0.47; REA 0.24
The complete package – great carcass numbers, incredible performance and a breed leading spread, going from a 71 lb. birth weight to a 1,434 lb. yearling weight. He sired the 2011 Denver Champion Female.

Donated by Ludvigson Stock Farms, Iowa and Montana

Lot F – LSF JBOB Expectation 6034S (#1108741)

BW -0.8; WW 50; YW 92; Milk 30; TM 55; Marb. 0.84; REA 0.46
An EPD monster – YW in top 9%, Milk top 3%, Marbling top 1% and Ribeye top 5%. A carcass and growth leader that is an up and coming breed star. Outcross genetics!

Donated by Pelton Red Angus, Burdett, Kan.

Lot G – Pelton % IMF 48S (#11311721)

BW 1.8; WW 47; YW 83; Milk 19; TM 43; Marb 0.78; REA 0.21
This first calf crop of this young Genex sire is outstanding. He has a real balanced EPD profile with an outstanding pedigree made for performance.

Donated by 5L Red Angus, Sheridan, Mont.

Lot H – 5L Destination 893-6215 (#1048134)

BW 4.1; WW 64; YW 103; Milk 8; TM 40; Marb. 0.28; REA 0.23
Destination's progeny continue to excel and remain in demand across the country. Balanced EPDs with exceptional maternal traits – sire of many top sellers in last two years.

Lot I – 5L Tradesman 1715-6237 (#1187423)

BW -1.5; WW 24; YW 50; Milk 21; Marb 0.07; REA -0.02
A Tradition son who is extraordinarily balanced and is rapidly becoming the top producing bull in the entire 5L lineup. Being used very heavily at 5L – semen is just now available.

Semen Donations

Donated by Wildcat Creek Ranch, Newton, Kan.

Lot J – SooLine Power Eye 161X (#1406779)

BW -0.9; WW 29; YW 61; Milk 11; TM 26; Marb -0.08; REA -0.04

WOW – Wildcat Creek has given you a tremendous opportunity in these next two bulls. Semen never before available on either of these bulls. Power Eye is sired by the \$70,000 SooLine Dispersal sale topper and out of a super producing and very stylish dam. Be one of the first in the nation to have Power Eye calves!

Lot K – Red Lazy McCC Detour 2W (#1352939)

BW 0.0; WW 29; YW 65; Milk 17; TM 31; Marb -0.17; REA 0.23

Another young rising star from Canada – he features phenotypic excellence and tremendous genetic potential. His dam was the Supreme Champion female of all breeds at the 2008 Agribition. Semen never available in the U.S. until now.

Donated by Star G Ranch, Douds, Iowa and Graystone Cattle, Co., Stockport, Iowa

Lot L – Mattson Challenger 5X (#1372419)

BW 3.3; WW 59; YW 135; Milk 19; TM 49; Marb. 0.11; REA 0.13

The FIRST semen available out of this record-breaking new bull! Challenger is the #1 bull of the entire Red Angus breed for Yearling Weight EPD. His is in the TOP 1% for YW, WW, TM & CW combining style, growth and maternal traits.

Donated by Nolin Red Angus, Monroe, Iowa

Lot M – Red Hill 17P Julian 101S (#1147667)

BW -0.8; WW 38; YW 70; Milk 19; TM 38; Marb 0.17; REA 0.41

A great carcass bull that puts growth and eye appeal in his calves. Will reduce birthweight in large cows and calves are shaped for easy-calving. Three of his first offspring are in this sale.

Lot N – PCC Ponderosa 4389 (#1011966)

BW 0.3; WW 45; YW 93; Milk 13; TM 35; Marb -0.12; REA -0.25

Another proven sire that puts extra length and pounds in his calves. At the top of the breed for yearling weights.

Donated by Steadfast Beef Genetics, Inman, Kan.

Lot O – Steadfast Boaz T71 (#1158668)

BW -2.3; WW 27; YW 55; Milk 55; Marb. -0.06; REA 0.02

An outstanding individual in the top 1% for CED, 3% for HPG, 4% for CEM and 1% for Stay. Sons of this double-bred Beckton Julian GG B571 bull have been averaging over \$3,000 at sales this spring.

*We have a small herd of registered Red Angus,
with fertility, calving ease, carcass and feed efficiency
being our main points of focus.*



*We want to welcome everyone to
stop by and see us, just give us a
call...we'd love to have ya!*

*Located 3 miles east of
Hale, Missouri*

TWYMAN RED ANGUS FARM

Home: 660-565-2581 / Terry Cell: 660-247-1650 / Barb cell: 660-214-0469



**TRAF Miss Statement 124X
Lot 1/Donation Heifer**



TWYMAN RED ANGUS – Terry & Barb Twyman
Hale, MO – 660-565-2581, home • 660-247-1650, cell

Open Heifer

TRAF MISS STATEMENT 124X

Reg. #: 1409081 — Calved: 03/11/2010 — Tattoo: 124X TRAF — 1A 100.0%

LJC LANCER 806	BECKTON LANCER T A664	Spring EPDs BW 0.9 WW 44 YW 87 Milk 16 TM 38 Stay 11 Marb. 0.02 REA 0.42 BFat 0.00
LJC MISSION STATEMENT P27	LJC HB LIZZIE 606	
LJC HANNAH 106	HOLDEN HI HO 753	
	LJC KJ JAMIE 516	
WES CHEROKEE N31	BFCK CHEROKEE CNYN 4912	
WES HAZEL U40	MUSHRUSH VALLEY GIRL 1	
HUST AZALEA M113	BIEBER VIRILE 7038	
	HUST AZALEA CH 3112	
BW 74 lbs./BR 100; WW 753 lbs./WR 100		

We purchased the dam of 124X from Spreutels, and she was bred by them resulting in this awesome heifer. The dam's side is a really solid, balanced pedigree; then you add the MISSION STATEMENT bull and she should make someone a real nice show heifer and an outstanding brood cow with a terrific future. I hope everyone appreciates her as much as we do, as we don't have much to put in this year's sale but want to support our state association.



TWYMAN RED ANGUS – Terry & Barb Twyman
Hale, MO – 660-565-2581, home • 660-247-1650, cell

Open Heifer

FOR ANNIE 153

Reg. #: 1341485 — Calved: 10/22/2009 — Tattoo: W081 FOR — 1A 100.0%

BECKTON LANCER F442 T	BECKTON LANCER T A664	Spring EPDs BW 0.9 WW 29 YW 55 Milk 15 TM 30 Stay 13 Marb -0.04 REA 0.08 Fat -0.02
MONTVUE F442-T LANCER R153	BKT SUFFEINA A828 DM	
MVK BITTERSWEET M264	LCC HO IN ONE 1252J	
	BUF CRK BITTRSWEET 5936	
CCF LIGHTNING 0011 ET	LARSON RED LIGHTNING	
DJN ANNIE	BJR EMILY 041-917	
DJN GOLDEN GIRL	ROCKY TOP	
	MARY KAY	
BW 71 lbs./BR 100; WW 497 lbs./WR 100		

Annie 153 is a very gentle heifer we purchased with her momma from Terry Forbes at last year's sale. This low maintenance heifer, ranked in the top 10% of the breed for ME, is out of a LANCER F442T son and a Neely cow. If we catch her with a good heat, we may A.I. her prior to the sale. Breeding information will be available sale day.



RRSH Miss Cover Girl • Lot 3



RUSH RED ANGUS – Rocky, Karen, & Tyler Rush
Jasper, MO – 417-394-2453

Open Heifer

RRSH MISS COVER GIRL

Reg. #: 1409572 — Calved: 09/20/2010 — Tattoo: 1020 RRS — 1A 100.0%

RED FINE LINE MULBERRY 26PRED COMPASS MULBERRY 449M
JKC HUCKLEBERRY 701 RED DUS FAYETTE 8G
 LJRA MISS NONE BET F647 LCHMN WIDE LOAD 1061C
 SODAK EMMA 2111
 BJR KING OF KINGS 942 LARSON KING JOHN 659
BJR CHEROK 101 BJR BONNEBELL 7G
 BRYLOR BJR CHEROK 63J RD DIVIDEND 7F
 RED BRYLOR CHEROK 40X

Spring EPDs	
BW	-0.2
WW	35
YW	70
Milk	26
TM	43
Stay	7
Marb	-0.08
REA	-0.07
Fat	-0.01

Attention juniors!! If you are looking for a young fall show heifer check out MISS COVER GIRL!! This great HUCKLEBERRY daughter has tons of look and eye appeal! She is super slick fronted, has great rib shape, and does not disappoint when you move behind her! Cover Girl is halter broke and has an easy disposition. She should make a great show heifer and super brood cow!



RUSH RED ANGUS – Rocky, Karen, & Tyler Rush
Jasper, MO – 417-394-2453

Open Heifer

RRSH MS JAVLIN 1053

Reg. #: 1381671 — Calved: 02/15/2010 — Tattoo: 1053 RRS — 1A 100.0%

BECKTON LANCER F442 T BECKTON LANCER T A664
LJC JAVELIN M08 BKT SUFFEINA A828 DM
 LJC LOGAN E56 945 GLACIER LOGAN 210
 BUCKEYE CHARLOTTE
 LCHMN GRANDCANYON 1244G BUF CRK CHF 824-1658
BROWN MS GRAND CANYON M6772 KRN REBA'S ROBIN
 BROWN MS NONE HEAVIER J LCHMN NONE HEAVIER1127D
 RABR MS WIDE LOAD 764

Spring EPDs	
BW	0.0
WW	38
YW	75
Milk	10
TM	29
Stay	10
Marb	0.14
REA	0.19
Fat	-0.02

BW 65 lbs./BR ; WW 443 lbs./WR

This JAVELIN daughter has loads of potential! With Grand Canyon and None Better in her dam's pedigree, she boasts a YW EPD in the top 19% of the breed.



LJC Javelin M08
Sire of Lots 4, 5 and 49



JP Miss Mimi X22 • Lot 7



RUSH RED ANGUS – Rocky, Karen, & Tyler Rush
Jasper, MO – 417-394-2453

Open Heifer

RRSH MS JAVLIN 1052

Reg. #: 1381670 — Calved: 02/10/2010 — Tattoo: 1052 RRSR — 1A 100.0%

BECKTON LANCER F442 T
LJC JAVELIN M08
LJC LOGAN E56 945

BJR JR 107
RABR MS QUEEN H6535
RABR MS 050

BECKTON LANCER T A664
BKT SUFFEINA A828 DM
GLACIER LOGAN 210
BUCKEYE CHARLOTTE
LMB JOHNY REB 091
BJR TIDY BEE 677-6186
LCHMN MDLD HVYWT2463
BB 5236 BBRED 5757

Spring EPDs	
BW	1.5
WW	39
YW	65
Milk	15
TM	34
Stay	12
Marb	0.12
REA	0.20
Fat	-0.04

BW 70 lbs./BR ; WW 444 lbs./WR

Another JAVELIN daughter that has loads of potential and should make an excellent replacement female. A maternal granddaughter of BJR JR 107 with balanced EPDs.



STAR G RANCH – Kyle Gilchrist
Douds, IA – 641-919-1077

Open Heifer

ROSE REVA X03 [OSF]

Reg. #: 1389704 — Calved: 03/12/2010 — Tattoo: X03 KRRR — 1A 100.0%

LCC MAJOR LEAGUE A502M
SCOTT FULL FORCE 818
SCOTT ELSA M10-6

SCOTT CUPID P15
SCOTT REVA 672
CBA 267

BFCK CHEROKEE CNYN 4912
KRN REBA'S ROBIN
SEEGER ROBIN HOOD
SCOTT ELSA 9965
BUF CRK ROMEO L081
SCOTT PREDONA 7112-M49
ALBERG MARIAS 615
LEACHMAN REVA H1228

Spring EPDs	
BW	-0.1
WW	31
YW	55
Milk	18
TM	34
Stay	7
Marb	0.30
REA	0.05
Fat	0.02

BW 84 lbs./BR 100; WW 564 lbs./WR 99

Reva X03 is a fancy, clean fronted March heifer combining the power of Major League X Romeo and Marias. She is halter broke and could make an excellent Junior project. She is tested OS Free and sells open ready to breed to the bull of your choice.



JP Crystal X23 • Lot 8



SAND RIDGE ANGUS – Raymond & Joyce Pace
 Tecumseh, MO – 417-679-4162, home • 417-989-0962, cell

Open Heifer

JP MISS MIMI X22

Reg. #: 1406214 — Calved: 08/08/2010 — Tattoo: X22 PACE — 1A 100.0%

BIEBER MAKE MIMI 7249 BJR MAKE MY DAY 981
WES MIMEX R07 BIEBER SIRENA 6708
 WES HONARY P36 EXCELLENT HOOD L14
 HUS 33 HILLARY 0139K

BROWN VACATION H7106 BECKTON JULIAN GG B571
BOLA MIA S335 LCHMN FLOWER C1161
 JEFFRIES MILDRED M84 LCHMN NO EQUAL 1174D
 JEFF MS JAYLA 6181J

Spring EPDs	
BW	-0.1
WW	35
YW	67
Milk	17
TM	34
Stay	10
Marb	0.06
REA	-0.04
Fat	-0.01

BW 64 lbs./BR 100; WW 601 lbs./WR 100

This exceptional heifer will give you great dividends on your investment. She is easy to handle, structurally correct, and as balanced as they come. Her dam is a VACATION daughter. This MAKE MIMI influenced heifer would be a perfect addition to your herd.



SAND RIDGE ANGUS – Raymond & Joyce Pace
 Tecumseh, MO – 417-679-4162, home • 417-989-0962, cell

Open Heifer

JP CRYSTAL X23

Reg. #: 1406578 — Calved: 08/25/2010 — Tattoo: X23 PACE — 1A 100.0%

BIEBER MAKE MIMI 7249 BJR MAKE MY DAY 981
WES MIMEX R07 BIEBER SIRENA 6708
 WES HONARY P36 EXCELLENT HOOD L14
 HUS 33 HILLARY 0139K

DJH HENDERSON HIGHLIGHT 515 ANDRAS HIGHLIGHT 3020
JP RED DANCE ANDRAS DEEDEE 295
 PINNACLE 322 PINNACLE 06
 SC PSERA I G 3120

Spring EPDs	
BW	0.5
WW	35
YW	66
Milk	18
TM	36
Stay	6
Marb	0.07
REA	0.03
Fat	-0.01

BW 68 lbs./BR 100; WW 591 lbs./WR 100

Exceptional is how you describe this heifer. Look how she is built to produce...large, balanced frame, excellent disposition and eye appeal. Another WES MIMEX R07 daughter with DJH HENDERSON HIGHLIGHT on her dam's side. Her dam has been an excellent producer for us. She will be ready to breed soon to your favorite bull.



Ms Lamine Sharon X740 • Lot 10



SAND RIDGE ANGUS – Raymond & Joyce Pace
 Tecumseh, MO – 417-679-4162, home • 417-989-0962, cell

Open Heifer

JP MIMI VACATION

Reg. #: 1364263 — Calved: 12/27/2009 — Tattoo: W18 PACE — 1A 100.0%

BIEBER MAKE MIMI 7249	BJR MAKE MY DAY 981	Spring EPDs
WES MIMEX R07	BIEBER SIRENA 6708	
WES HONARY P36	EXCELLENT HOOD L14	
	HUS 33 HILLARY 0139K	
BROWN VACATION H7106	BECKTON JULIAN GG B571	BW -0.1
TBR DINA P212	LCHMN FLOWER C1161	WW 35
LCC DINA MA060	BFCK CHEROKEE CNYN 4912	YW 67
	LEACHMAN DINA F1284	Milk 17
		TM 34
		Stay 12
		Marb 0.01
		REA 0.08
		Fat -0.02

BW 74 lbs./BR 100; WW 532 lbs./WR 100

MIMI Vacation is a LOOKER! Check-out this pedigree lineup – MAKE MIMI and BROWN VACATION. She is open and ready to breed. Super easy to work with and has exceptional width and depth of body.



LAMINE VALLEY RED ANGUS – Robert & Susan Felten
 Pilot Grove, MO – 660-834-3445, home • 660-621-2083, cell

Open Heifer

MS LAMINE SHARON X740

Reg. #: 1383773 — Calved: 03/15/2010 – Tattoo: X740 LVFM — 1A 100.0%

LCC RIBEYE A133L	BFCK CHEROKEE CNYN 4912	Spring EPDs
LSF RIBEYE 6106S	LCHMN LARKABA J1263	
LEACHMAN DINA C1001	LMAN NONE BETTER 9604	
	LMAN DINA 9259	
LSF COMBINATION A301M	LCHMN TOP BRASS 1049H	BW -0.7
MS LAMINE COMBINATION P009	WHF LASS 27G-29J	WW 26
BIEBER KAREN 5941	BIEBER SITTINGBULL 5374	YW 45
	BIEBER KAREN 3003	Milk 10
		TM 23
		Stay 9
		Marb 0.20
		REA -0.11
		Fat -0.01

BW 74 lbs./BR 97; WW 485 lbs./WR 90

A fancy young heifer with loads of potential. MS Lamine Sharon is a shapely daughter of our herd bull, LSF RIBEYE 6106S, from Ludvigsons. He is a moderate-framed bull with Leachman Dina cow line on his dam's side. Her maternal grandsire is LSF COMBINATION A301M.



Ms Lamine Dawn X720 • Lot 11

11
Open Heifer

LAMINE VALLEY RED ANGUS – Robert & Susan Felten
Pilot Grove, MO – 660-834-3445, home • 660-621-2083, cell

MS LAMINE DAWN X720

Reg. #: 1383768 — Calved: 03/03/2010 — Tattoo: X720 LVFM — 1B 96.3%

LCC RIBEYE A133L	BFCK CHEROKEE CNYN 4912	Spring EPDs
LSF RIBEYE 6106S	LCHMN LARKABA J1263	
LEACHMAN DINA C1001	LMAN NONE BETTER 9604	BW 1.0
	LMAN DINA 9259	WW 38
LCC FEEL'N LUCKY 1035J	BJR MAKE MY DAY 981	YW 61
MS NSF LUCKY N306	LEACHMAN LARKABA C1223	Milk 15
NEO-SHO TOO X180	LEACHMAN RIMROCK TOO	TM 34
	LEACHMAN G627	Stay 5
BW 89 lbs./BR 117; WW 574 lbs./WR 107		Marb 0.10
MS Lamine Dawn X720 is another good daughter of our LSF RIBEYE 6106S herd bull. X720 has a WW Ratio of 107 in our herd with a Dam MPPA of 103.4. This is a good looking, solid heifer with as much maternal potential as any around.		REA -0.02
		Fat -0.02

12
Open Heifer

LAMINE VALLEY RED ANGUS – Robert & Susan Felten
Pilot Grove, MO – 660-834-3445, home • 660-621-2083, cell

MS LAMINE MISTY X810

Reg. #: 1383769 — Calved: 02/20/2010 — Tattoo: X810 LVFM — 1B 99.9%

LCC RIBEYE A133L	BFCK CHEROKEE CNYN 4912	Spring EPDs
LSF RIBEYE 6106S	LCHMN LARKABA J1263	
LEACHMAN DINA C1001	LMAN NONE BETTER 9604	BW 1.0
	LMAN DINA 9259	WW 37
NEO-SHO LA ROCA H284	BIEBER PROJECT RED 5827	YW 65
MS NSF LA ROCA N236	MS NEO-SHO 32AA E381	Milk 17
MS NSF CRUSADER H761	NEO-SHO CRUSADER E442	TM 35
	MS NEO-SHO 2131 C147	Stay 8
BW 78 lbs./BR 102; WW 602 lbs./WR 112		Marb 0.07
MS Lamine Misty X810 has impressed us with her growth potential, posting a WW Ratio of 112. She also has strong WW and YW EPDs, while maintaining a very moderate ME score. She will make someone an excellent brood cow.		REA 0.01
		Fat -0.01

13**DIAMANTE RANCH LLC – Glenn & Randy Brown**
Diamond, MO – 417-325-6292, home • 417-434-0800, cell*Open Heifer***DR PEARL T116 X003**

Reg. #: 1381096 — Calved: 03/13/2010 — Tattoo: X003 343D — 1A 100.0%

NSF SQUABBLE N540
DR HENRY N540 T116
JRA JAMES 4251BIEBER MAKE MIMI 7249
MS NSF PROOF J862
LCC MAJOR LEAGUE A502M
JRA JAMES 3340NSF SQUABBLE N540
DR ROCKIN' ROBIN N540 T049
DCRF RAMBLER 85NBIEBER MAKE MIMI 7249
MS NSF PROOF J862
BJR RAMBLER 5162
DCRF MONU 303 51LSpring EPDs

BW	2.3
WW	41
YW	79
Milk	19
TM	40
Stay	7
Marb	0.08
REA	-0.01
Fat	-0.04

BW 89 lbs./BR 122; WW 644 lbs./WR 119; YW 943 lbs./YR 111

A real top of the crop heifer with MAKE MIMI on both sides of her pedigree. Going back to Major League and Rambo 502, this heifer is in the top 20% of the breed for WW, YW, TM, and FAT with a WW ratio of 119 and a YW ratio of 111. A growthy heifer that will add pounds to your next calf crop. Pictures of our lots will be available on our website: diananteranch.net.

14**DIAMANTE RANCH LLC – Glenn & Randy Brown**
Diamond, MO – 417-325-6292, home • 417-434-0800, cell*Open Heifer***DR SHEENA T116 X005**

Reg. #: 1381089 — Calved: 03/17/2010 — Tattoo: X005 343D — 1A 100.0%

NSF SQUABBLE N540
DR HENRY N540 T116
JRA JAMES 4251BIEBER MAKE MIMI 7249
MS NSF PROOF J862
LCC MAJOR LEAGUE A502M
JRA JAMES 3340LCC NEW CHAPTER A705L
JRA JAMES 4270
JRA JAMES 3374BFCK CHEROKEE CNYN 4912
MISS LL ROB LOW 929
LMAN KING ROB 8621
JRA JAMES TJSpring EPDs

BW	1.2
WW	46
YW	81
Milk	22
TM	45
Stay	10
Marb	0.15
REA	0.12
Fat	-0.02

BW 80 lbs./BR 101; WW 638 lbs./WR 109; YW 939 lbs./YR 108

Another DR HENRY daughter with James cow lines on top and bottom. Her stacked pedigree includes New Chapter, King Rob, Major League, and BJR JR 107. In the top 8% for WW, 11% for YW and MILK, 2% for TM, 18% HPG, 15% CW and 8% Fat, she is a real growth and carcass standout in a maternal package.

15**NOLIN RED ANGUS – Mike Nolin & Jessica Nolin Barnett**
Monroe, IA – 641-793-2976, home • 641-521-5039, cell*Open Heifer*

Reg. #: Pending — Calved: — Cat. 2 100.0%

1BWJ JULIAN 17P
RED HILL 17P JULIAN 101S
1BWJ BARMAID 54PBECKTON JULIAN GG B571
BKT MARTA 9A13 JL
BFCK CHEROKEE CNYN 4912
BECKTON BARMAID M554 CHLCC MAJOR LEAGUE A502M
NOLIN'S MAJOR RED
JSN GOLDEN RODBFCK CHEROKEE CNYN 4912
KRN REBA'S ROBIN
JSN RED DAWN
JRA JAMES 2157Proj. EPDs

BW	-0.9
WW	38
YW	68
Milk	20
TM	39
Stay	13
Marb	0.15
REA	0.27
BFat	0.00

This heifer's dam is the \$3300 Iowa Beef Expo entry, Nolin's Major Red who is co-owned with Gary Wall in Montana. A full sister sold in the Missouri Fall Sale and a full brother was the first bull picked off our farm. If you want easy fleshing, high carcass numbers, she is IT! Pedigree is a who's who of great bulls. Out of our Red Hill 17P Julian 101S stud with half siblings as bull Lots 21 & 25. Lot 15 will be registered by sale day.



RGRS Gold Lady XH156 • Lot 16

16

ROGERS RANCH RED ANGUS – Raymond, Steven, & Nathan Rogers
Princeton, MO – 660-748-6350, Nathan • 660-654-1591, Steven

Open Heifer

RGRS GOLD LADY XH156

Reg. #: 1405752 — Calved: 02/26/2010 — Tattoo: XH156 RGRS — 1A 100.0%

BJR JR 107
LMB JOHNY REB 091
BJR TIDY BEE 677-6186

RKA 1300 702
LMB ST RENEE 858
BJR RAMBLER 5162
BJR TIDY BE 1272-11L

HRH GOLD LADY H156
HRH DESTINY 102-0
HRH GOLDLADY 15

CV PBC DESTINY 2
HRH REBELA 2
VAF HRH MOUNTAIN MAN
HRH GOLD LADY 9

Spring EPDs	
BW	0.8
WW	24
YW	37
Milk	19
TM	31
Stay	8
Marb	0.00
REA	-0.09
Fat	-0.03

BW 75 lbs./BR 103; WW 494 lbs./WR 104

Gold Lady is an attractive heifer out of one of our top-producing original Red Angus cows. Her dam does exactly what makes Red Angus great cattle; she weans a quality calf at least every 365 days for 10 years running! We have sold several half brother bulls of this heifer and even kept one back as a clean-up bull for heifers. It's hard to part with daughters of BJR JR 107 like this one.

17

ROGERS RANCH RED ANGUS – Raymond, Steven, & Nathan Rogers
Princeton, MO – 660-748-6350, Nathan • 660-654-1591, Steven

Open Heifer

RGRS REBA XU100

Reg. #: 1405748 — Calved: 03/16/2010 — Tattoo: XU100 RGRS — 1A 100.0%

RGRS MAJOR GOLD U156
LCC MAJOR LEAGUE A502M
HRH GOLD LADY H156

BFCK CHEROKEE CNYN 4912
KRN REBA'S ROBIN
HRH DESTINY 102-0
HRH GOLDLADY 15

RGRS REBA UK100
LCC VAQUERO 1412J
HRH REBA K100

LEACHMAN COWBOSS 1129G
PARK MISS WIDELOAD F648
HRH JIMINY H187
HRH REBA 141-7

Spring EPDs	
BW	0.7
WW	32
YW	59
Milk	13
TM	29
Stay	7
Marb	0.04
REA	-0.07
Fat	-0.02

BW 65 lbs./BR 100; WW 443 lbs./WR 100

Out of an outstanding first calf heifer sired by LCC VAQUERO, Reba is a stylish, deep bodied heifer ready to to work. Her sire is a MAJOR LEAUGE son that is a half brother to Lot 16. Reba XU100 has solid EPDs and lots of potential to make a name for herself in your herd.



JRSF Ruff N Ready • Lot 18

18
Bull

JAMES RIVER FARMS – Butch Stange & Aaron Crosby
Rogersville, MO – 417-753-3278, home • 417-300-1817, cell

JRSF RUFF N READY [OSF]

Reg. #: 992548 — Calved: 02/20/2004 — Tattoo: 792P JRSF — 1A 100.0%

CIRCLE A MY DAY 0512
BJR MAKE MY DAY 981
BJR MELODY 1239-923

JRSF MS EQUAL 334L
LCHMN NO EQUAL 1174D
LSF CHARISMA J1357

BJR EASY RIDER 781
BJR TOW KANA 117-710
BJR ROLLIN ON 6232-2101
BJR MELODY 117-726

LMAN NONE BETTER 9604
LMAN PRAIRIE Q 9308
LCHMN ON TARGET 1016E
LJRA CHARISMA D405

Spring EPDs	
BW	-1.4
WW	24
YW	50
Milk	25
TM	37
Stay	7
Marb	0.28
REA	0.10
Fat	-0.02

BW 78 lbs./BR 92; WW 767 lbs./WR 106

It is extremely rare to come across the opportunity to buy a special bull like Ruff n Ready. He is a proven breeder with the phenotype, genotype and EPDs that we all want. Daughters and sons of this great sire have topped our sales as well as other sales around the country. It will be hard for us to part with him, but somebody is going to get a breed leader, and he will definitely add value to your herd.

Floor Price: \$5,000

19
Bull

LAMINE VALLEY RED ANGUS – Robert & Susan Felten
Pilot Grove, MO – 660-834-3445, home • 660-621-2083, cell

LAMINE RIB-EYE SURPRISE X630

Reg. #: 1383774 — Calved: 03/05/2010 — Tattoo: X630 LVFM — 1A 100.0%

LSF RIBEYE 6106S
LCC RIBEYE A133L
LEACHMAN DINA C1001

MS LAMINE SURPRISE P020
BIEBER HOT ROCK 7946
BIEBER SUPRISE 6017

BFCK CHEROKEE CNYN 4912
LCHMN LARKABA J1263
LMAN NONE BETTER 9604
LMAN DINA 9259
BIEBER TITAN 6894
BIEBER SIERRA 5516
BJR JR 091-761
BIEBER SUPRISE 5229

Spring EPDs	
BW	-1.1
WW	39
YW	64
Milk	11
TM	31
Stay	9
Marb	0.15
REA	-0.22
Fat	-0.02

BW 78 lbs./BR 100; WW 657 lbs./WR 111

Rib-Eye Surprise X630 is a thick, gentle bull out of our LSF RIBEYE 6106S herdbull from Ludvigson's. 6106S is a moderate-framed bull out of the famed Dina cow line. X630 has good growth numbers, top 23% WW and top 41% YW, while maintaining a moderate birth weight, top 22% CED and top 29% BW. His dam boasts a 104.5 MPPA.

Floor Price: \$2,000



Lamine Rib-Eye Surprise X630 • Lot 19

20
Bull

LAMINE VALLEY RED ANGUS – Robert & Susan Felten
Pilot Grove, MO – 660-834-3445, home • 660-621-2083, cell

LAMINE DIRECT ADVANCER X580

Reg. #: 1383755 — Calved: 02/26/2010 — Tattoo: X580 LVFM — 1A 100.0%

5L DIRECT FIRE 1641-6443 C A FUTURE DIRECTION 5321
5L DIRECT DESIGN 893-6315 5L FIREFLY 174-1641 ET
 5L ADINA 525-893 BON VIEW NEW DESIGN 878
 5L ADINA 293-525
 PERKS ADVANCER 9088 RBJR ADVANCE A709
MS LAMINE ADVANCER U013 HMV MS RAMBO 502
 MS HAMMEL HVN BUST N96 HAMMEL HVN OR BUST G12
 MS HAMMEL PACKER J161

Spring EPDs	
BW	4.8
WW	52
YW	87
Milk	16
TM	42
Stay	10
Marb	0.15
REA	0.14
Fat	-0.04

BW 98 lbs./BR 100; WW 676 lbs./WR 100

If you want a bull that will put some pounds on your calves, don't miss Direct Advancer X580. With a WW EPD in the top 2%, YW in the top 5%, and TM in the top 6%, this bull will do it! X580 is from 5L's Direct Design with Perks Advancer 9088 and the Hammel cow line on the maternal side.

Floor Price: \$2,000

21
Bull

LAMINE VALLEY RED ANGUS – Robert & Susan Felten
Pilot Grove, MO – 660-834-3445, home • 660-621-2083, cell

LAMINE RED ARROW X670

Reg. #: 1383759 — Calved: 02/21/2010 — Tattoo: X670 LVFM — 1A 100.0%

1BWJ JULIAN 17P BECKTON JULIAN GG B571
RED HILL 17P JULIAN 101S SHADY'S MS MARIAS 283
 1BWJ BARMAID 54P BFCK CHEROKEE CNYN 4912
 BECKTON BARMAID M554 CH
 BIEBER FOUR SQUARE 6912 BIEBER STRAIGHT ARROW
RRM KAMILLE 4 SQUARE BIEBER SIERRA 5516
 SBCC KAMILLE K-320 BIEBER KEMO-SABE 3948
 W E LARSON

Spring EPDs	
BW	0.0
WW	36
YW	65
Milk	18
TM	36
Stay	12
Marb	0.12
REA	0.19
Fat	-0.01

BW 78 lbs./BR 100; WW 583 lbs./WR 98

Red Arrow X670 is one of our first calves out of RED HILL 17P Julian 101S. His calves appear to be very consistent. X670 has balanced EPDs and a good phenotype. I think the RED HILL 101S calves will do well. We have kept several of his bulls and heifers in our herd for this year. Half siblings sell as Lots 15 & 25.

Floor Price: \$2,000



Lamine Red Arrow X670 • Lot 21

22

Bull

**NOLIN RED ANGUS – Mike Nolin & Jessica Nolin Barnett
Monroe, IA – 641-793-2976, home • 641-521-5039, cell**

NOLIN'S ADIEL 410

Reg. #: 1356989 — Calved: 07/15/2009 — Tattoo: 410 MGN — 1A 100.0%

PCC PONDEROSA 4389
BADLANDS MR BEEF 805
SCOTT MISS ILKA 908J

NOLIN'S MISS ASHLEY
CHAMPION HILL 4100 1757
H A PRIDE LASSIE

HLH BUSTER 406 603
BADLANDS KEEPSAKE 632
LCHMN ON TARGET 1016E
LARSON JESSA ILKA 511

L F NEW TREND 4100
L L A GEORGINA 419
CHAMPION HILL LARIAT
H A PRIDE LASSIE 1288

Spring EPDs	
BW	0.7
WW	32
YW	66
Milk	14
TM	30
Stay	4
Marb	-0.04
REA	-0.04
Fat	0.00

BW 70 lbs./BR 100; WW 525 lbs./WR 100

A bull with the age and size to cover a lot of cows. His mother won four state Junior Beef Expos. She is a red outcross from black Champion Hill genetics and is that 5 frame, 1200 lb. cow that everyone one wants. Adiel 410 is sired by our curve-bending growth leader PCC Ponderosa whose daughters are milk machines. Half brother sells as Lot 23.

Floor Price: \$2,000

23

Bull

**ROGERS RANCH RED ANGUS – Raymond, Steven, & Nathan Rogers
Princeton, MO – 660-748-6350, Nathan • 660-654-1591, Steven**

RGRS PONDEROSA XK1439

Reg. #: 1405756 — Calved: 03/03/2010 — Tattoo: X1439 RGRS — 1A 100.0%

PCC PONDEROSA 4389
BADLANDS MR BEEF 805
SCOTT MISS ILKA 908J

LSF SABRINA E512 K1439
LCC HEAVEN OR BUST1000B
PARK MISS WIDELOAD E512

HLH BUSTER 406 603
BADLANDS KEEPSAKE 632
LCHMN ON TARGET 1016E
LARSON JESSA ILKA 511

LEACHMAN HEAVENLY 8141
LMAN MARY 9003
LCHMN WIDE LOAD 1061C
NUGET KURTBIRINA CNH

Spring EPDs	
BW	6.1
WW	42
YW	87
Milk	13
TM	34
Stay	5
Marb	-0.06
REA	-0.16
Fat	-0.03

BW 104 lbs./BR 131; WW 505 lbs./WR 93; YW 1298 lbs./YR 108

If you are looking for growth and feed efficiency, this PCC PONDEROSA son is hard to miss! The TOP gaining bull on our farm this spring, Ponderosa XK1439 gained 5.0 lbs. per day, beating out all 35 contemporaries including the Simmental and Composite bulls. His yearling weight of 1,298 lbs. puts his EPD for YW in the top 5% of the breed. Out of a wide-muzzled Ludvigson cow, his half brother out of PACKER is working at the MU Research Farm at Linneus.

Floor Price: \$2,200



Perks Express 716T • Sire of Lot 24

24
Bull

ROGERS RANCH RED ANGUS – Raymond, Steven, & Nathan Rogers
Princeton, MO – 660-748-6350, Nathan • 660-654-1591, Steven

PERKS EXPRESS 039X

Reg. #: 1353743 — Calved: 03/12/2010 — Tattoo: 039X PERK — 1A 100.0%

PIE EXPRESS 5148
PERKS EXPRESS 716T
PIE FAYE 4216

PIE ATLANTIC 2204
PIE PRIME CANYON 927
RED STEWART WATCH MAN 2L
PIE BO'S EXPO 0109

GCF - NO BETTER PIE
GCF KITTYPIE III
CAMPBELL CR KITTY

BIL-NB-824
GCF RITA-PIE
JRA JAMES 1276
CAMPBELL CREEK KATE

Spring EPDs	
BW	-0.4
WW	27
YW	48
Milk	13
TM	26
Stay	9
Marb	-0.24
REA	0.05
Fat	0.00

BW 82 lbs./BR 93; WW 597 lbs./WR 100; YW 1286 lbs./YR 100

An outstanding individual, 039X was purchased at his momma's side at the historic Perks Ranch Dispersal in June. We liked that pair so much we bought his full sister too and brought home the whole family! Out of the \$7700 Perks Express 716T, this bull boasts a 4.34 ADG on test and an adjusted YW of 1,292 lbs. packing growth with calving ease. Hard to find one this good with as much outcross potential!

Floor Price: \$2,500

25
Bull

ROGERS RANCH RED ANGUS – Raymond, Steven, & Nathan Rogers
Princeton, MO – 660-748-6350, Nathan • 660-654-1591, Steven

RGRS JULIAN W66

Reg. #: 1405078 — Calved: 11/19/2009 — Tattoo: W66 RGRS — 1A 100.0%

1BWJ JULIAN 17P
RED HILL 17P JULIAN 101S
1BWJ BARMAID 54P

BECKTON JULIAN GG B571
SHADY'S MS MARIAS 283
BFCK CHEROKEE CNYN 4912
BECKTON BARMAID M554 CH

PCC PONDEROSA 4389
MGN 371
JRA JESSICA 1861

BADLANDS MR BEEF 805
SCOTT MISS ILKA 908J
RED STAR
JRA JAMES 948

Spring EPDs	
BW	0.9
WW	33
YW	65
Milk	18
TM	34
Stay	11
Marb	0.00
REA	0.15
Fat	0.00

BW 66 lbs./BR 100; WW 692 lbs./WR 100; YW 1090 lbs./YR 100

Out of a first calf heifer that calved at 22 months of age, this son of Nolin's RED HILL 17P Julian 101S bull has been extra thick since he hit the ground. Moderate-framed, heavy muscled and age advanced, he will be perfect on heifers and durable enough to cover cows. His half brother sold for \$2800 at the Iowa Beef Expo. This combination of JULIAN and MR BEEF genetics will be a calving ease specialist! A half-sib to Lots 15 & 21. Check out our website for pictures prior to the sale: www.rogersbeef.com.

Floor Price: \$2,200



BJR Windsong 2269 • Dam of Lot 28

26

DCJ RED ANGUS — Dennis & Cheryl Jacobs
Purdin, MO – 660-244-3932

Bull

DCJ QUICK DRAW X20

Reg. #: 1379557 — Calved: 03/17/2010 — Tattoo: X20 DCJ — 1A 100.0%

LJC LANCER 806
LJC MISSION STATEMENT P27
LJC HANNAH 106

BECKTON LANCER T A664
LJC HB LIZZIE 606
HOLDEN HI HO 753
LJC KJ JAMIE 516

EXCELLENT HOOD L14
WES HONARY P36
HUS 33 HILLARY 0139K

LMAN ROBIN HOOD 1174B
BIEBER DESIGN 5338
SCHULER ON TARGET 7733G
HUST R2 4552 6042

Spring EPDs	
BW	1.5
WW	44
YW	90
Milk	15
TM	37
Stay	10
Marb	0.14
REA	0.27
Fat	0.00

BW 95 lbs./BR 105; WW 692 lbs./WR 101

Out of a Spreutels cow purchased at the 2009 Fall Sale, this MISSION STATEMENT son is a long-bodied, thick made bull that should be ready to work on cows. His weaning weight of 675 lbs. and yearling weight of 1164 lbs. put his EPDs in the top 12% for WW and 4% for YW. An impressive pedigree, with Robin Hood and On Target on his dam's side.

Floor Price: \$2,000

27

HARMONY HILLS RED ANGUS — Larry & Merrilyn Ellison
Fair Grove, MO – 417-759-9125, home • 417-838-8772, cell

Bull

HARMONYS SRA COPPER 010

Reg. #: 1407963 — Calved: 02/06/2010 — Tattoo: 010 02HH — 3 75.0%

OHRD DAKOTA COPPER 29K
6-337U
6-337

LCHMAN COPPER ROB 1204D
MESSMER OPHELIA 9502
CNS DREAM ON L186
13669

LCC MAJOR LEAGUE A502M
PELTON MISS ARELLA 0854U
PELTONS MISS KARLA 0529R

BFCK CHEROKEE CNYN 4912
KRN REBA'S ROBIN
BECKTON LANCER F442 T
PELTONS MIAA VWW 0114K

Spring EPDs	
BW	-0.2
WW	29
YW	50
Milk	13
TM	28
Stay	10
Marb	0.16
REA	0.22
Fat	0.00

BW 72 lbs./BR 100; WW 698 lbs./WR 100; YW 1145 lbs./YR 100

A true "Profit Maker" crossbred bull. Copper is a stout, thick, meaty ¾ Red Angus, ¼ Simmental that you will love to see walking in your pasture. His dam is a Major League daughter out of a Lancer 442 cow and was a top selling bred heifer in Pelton's 2009 sale. His sire is a son of OHRD Dakota Copper out of a Dream On daughter. Copper is not just any crossbred bull – he is a genetically planned powerhouse that is also phenotypically perfect. He had an adjusted yearling weight of 1,145 lbs. and is hard as a rock. He scanned a 14.3 REA with 4.02 IMF. Red Angus/Simmental bulls like Copper are hard to find – don't let him get away.

Floor Price: \$2,500



Feddes Blockana R91 • Lot 29

28

HARMONY HILLS RED ANGUS — Larry & Merrilyn Ellison
Fair Grove, MO – 417-759-9125, home • 417-838-8772, cell

Cow/Calf Pair

HARMONYS WINDSONG 0229

Reg. #: 1305992 — Calved: 02/15/2009 — Tattoo: 0229 NICK — 1A 100.0%

5L DESTINATION 893-6215
5L SUMMIT 1145-6327
5L HAZEL 203-1145

5L DIRECT FIRE 1641-6443
5L ADINA 525-893
O C C LEGEND 616L
5L HAZEL 1821-203

RED BRYLOR NEW TREND 22
BJR WINDSONG 2269
SODAK WINDSONG 7030

SSS BLACK TREND 13B
MEADOW CK MS SEAMAN 31A
SODAK OSCAR 4386
SODAK RAIN DANCER 2068

Spring EPDs	
BW	2.6
WW	38
YW	72
Milk	21
TM	40
Stay	15
Marb	0.01
REA	0.09
Fat	-0.01

BW 70 lbs./BR ; WW 753 lbs./WR ; YW 904 lbs./YR

A real cow prospect – a first calf heifer out of the great 5L Summit whose semen is still not available on the open market. Her dam is the \$ 14,000 BJR Windsong 2269 that is now a donor for the Majestic Meadows herd in Maryland – they have sold a lot of high priced embryos out of her since buying her from us in 2009. Of the 15 females in our small herd, 9 are daughters or granddaughters of Windsong 2269 – that’s how much we think of her! 0229 is thick and broody just like her mother. **Has a heifer calf at side born March 1 by Make Mimi.** Sells open with 2 straws of Packer semen.

29

HARMONY HILLS RED ANGUS — Larry & Merrilyn Ellison
Fair Grove, MO – 417-759-9125, home • 417-838-8772, cell

Spring Bred Cow

FEDDES BLOCKANA R91

Reg. #: 1025973 — Calved: 02/16/2005 — Tattoo: R91 FRI — 1A 100.0%

VGW KING OF THE WEST
5L NORSEMAN KING 2291
NORSEMAN 1312 PJM

VGW ACE 613
VGW MT TABITHA 9633
376 P J M 141
P J M POWERPOINT 2009

LARSON RED LIGHTNING
FEDDES BLOCKANA 899
FED'S BLOCKANA 4231

LMN IMPRESSIVE ROB1095B
LARSON CRIS 926
BJR RAMBLER 5162
BJR BLOCKANA 502-5185

Spring EPDs	
BW	-0.7
WW	21
YW	49
Milk	24
TM	34
Stay	7
Marb	0.14
REA	0.39
Fat	-0.03

BW 79 lbs./BR ; WW 660 lbs./WR

If you want to add a front-pasture, donor quality female to your herd – look this cow over closely – she could put your herd on the map. A Norseman King daughter out of the \$40,000 Feddes Blockanna 899 cow. R91 was the top selling open heifer in the Feddes 2005 production sale. Her first calf sold in Ludvigson’s 2008 bred heifer sale. Her second calf brought \$4,500 as a yearling heifer at the 2009 Iowa Beef Expo. Her June 2010 bull calf by the \$10,000 Feddes Norse Fire 7149 will be exhibited with her sale day but will not sell – he will be in our show string this summer. **Bred back to Norse Fire for a late May calf** – her calf will be a double bred Norseman King !

30**HARMONY HILLS RED ANGUS — Larry & Marilyn Ellison**
Fair Grove, MO – 417-759-9125, home • 417-838-8772, cell

Cow/Calf Pair

HARMONYS JACKIE 709

Reg. #: 1309728 — Calved: 01/30/2009 — Tattoo: 709 02HH — 3 50.0%

5L DIRECT FIRE 1641-6443 C A FUTURE DIRECTION 5321
FEDDES NORSE FIRE 7149 5L FIREFLY 174-1641 ET
 FEDDES BLOCKANA R11 5L NORSEMAN KING 2291
 FEDDES BLOCKANA 173

BOZ REDCOAT HERCULES 538P
MISS REDCOAT P53 BOZ RED LADY
 MISS PASQUE H53 3C PASQUE 8773
 CRS TARA

Spring EPDs

BW	2.2
WW	34
YW	60
Milk	21
TM	38
Stay	6
Marb	0.01
REA	0.42
Fat	-0.04

BW 82 lbs./BR 100; WW 762 lbs./WR 100; YW 1015 lbs./YR 100

A strong, broody Category 3 first calf heifer. Jackie is out of our \$10,000 Feddes Norse Fire and out of a registered Simmental dam. This is an outstanding ProCow female – she had a yearling weight of 1,015 lbs. and a weaning weight of 762 lbs. and has a REA EPD of +.42! Her udder is excellent – **she has a February 23 heifer calf by Andras Hobo 716.** Sells open.

31**NOLIN RED ANGUS – Mike Nolin & Jessica Nolin Barnett**
Monroe, IA – 641-793-2976, home • 641-521-5039, cell

Flush Cow

LCC BLOXY NA585

Reg. #: 956555 — Calved: 03/01/2003 — Tattoo: NA585 JHL — 1A 100.0%

LMAN NONE BETTER 9604 LEACHMAN BETTER HVY8041
LCHMN NO EQUAL 1174D LEACHMAN ELEANOR
 LMAN PRAIRIE Q 9308 BITTERROOT GOLD 25XA
 PRF PRAIRIE Q P322

COPPER TOP CHIEF 301 RCN CANYON CHIEF
LMAN BLOXY 9038 DORY 155
 LEACHMAN BLOXY 6381 CV FOUR TIMES
 LEACHMAN BLOXY 1940

Spring EPDs

BW	0.8
WW	33
YW	58
Milk	22
TM	38
Stay	10
Marb	-0.10
REA	-0.06
Fat	-0.04

WW 649 lbs./WR

Sired by LCHMN NO EQUAL and from the famed Bloxy cow family, this is a top-tier pedigree. A Leachman ET female and so branded, we purchased her at their dispersal sale. Bloxy NA585 is a moderate frame, big volume cow with a good udder. **Selling 1/2 interest with full possession.** We want to co-flush her and she sells open ready to go.

32**JAMES RIVER FARMS – Butch Stange & Aaron Crosby**
Rogersville, MO – 417-753-3278, home • 417-300-1817, cell

Embryos

3 EMBRYO PACKAGES

Choice of Sires — Dam Reg. #: 657307

Choice of Sires:

Lot 32A – **MLK CRK FOUNDATION 110** (#803223)Lot 32B – **5L NORSEMAN KING 2291** (#806707)Lot 32C – **PERKS ADVANCE 121R** (#765746)

LMAN ROBIN HOOD 1174B LMAN KING ROB 8621
LSF DINA C1001 J1415 LEACHMAN PRILARK
 LEACHMAN DINA C1001 LMAN NONE BETTER 9604
 LMAN DINA 9259

Proj. EPDs with Sire A: BW -1.5; WW 33; YW 71; Milk 26; TM 42; Stay 5.

Proj. EPDs with Sire B: BW -0.0; WW 30; YW 65; Milk 16; TM 31; Stay 5.

Proj. EPDs with Sire B: BW 1.3; WW 36; YW 72; Milk 7; TM 25; Stay 4.

Selling 3 embryos on each lot with a guarantee of 1 pregnancy if implanted by a certified technician.

33**COFFMAN RED ANGUS — Rick & Sandra Coffman**
Douds, IA — 641-936-7139, home • 641-919-4077, cell

Cow/Calf Pair

RSK MISSY 3109

Reg. #: 1361202 — Calved: 02/28/2009 — Tattoo: 3109 RSK — 1A 100.0%

PAR DUDE A384N	PAR-LCC NEW ERA 1757K
LSF RR PICASSO 7806T	PAR SELMA K1220
RRSO GRAND CLASS MA193	LCHMN GRANDCANYON 1244G
	DUNNS FLY FIRST CLASS
RED SSS HIGH MARK 272D	R SSS HIGH LINE 402M
RSK DEW DROP	SSS MISS REDCAP 87T
BECKTON MINOLA H287 HD	BECKTON HADRIAN F C486
	BECKTON MINOLA B058 CL

Spring EPDs

BW	-3.9
WW	26
YW	53
Milk	16
TM	29
Stay	6
Marb	0.12
REA	-0.01
Fat	-0.02

BW 58 lbs./BR 84; WW 473 lbs./WR 97

RSK Missy is a moderate framed, first calf heifer **with a bull calf at side born 3/4/11 weighing 63 lbs.** Missy goes back to Beckton Minola and SSS High Mark on the dam side. Missy is in the top percentile in the breed for CED 4%, BW 5%, CEM 1%, YW 20% and FAT 8%. Her bull calf is out of Coffman Red Angus and Genex's LSF NSF POUNDMAKER 9534W; a Neo-Sho Ferdinand and MS NSF MIMI son whose stacks up in the top 2% for WW, 1% for YW, 4% TM, 1% HPG, 15% CEM and 1% CW. The combination of these two should be a powerful EPD bull. This is the first POUNDMAKER calf to be born and sold – be sure to look them over closely on sale day.

34**COFFMAN RED ANGUS — Rick & Sandra Coffman**
Douds, IA — 641-936-7139, home • 641-919-4077, cellSpring Bred
Cow**RSK MISS ANNIE 1407**

Reg. #: 1269285 — Calved: 03/15/2008 — Tattoo: 1408 RSK — 1A 100.0%

GLACIER CHATEAU 744	LMAN KING ROB 8621
RSK MACHO	GLACIER REBALA
RSK REDBUD 97	RD DREAMMAKER OF 3R
	FJL REDBUD 227N
BIEBER IMPACT 4399	T3 CHIEF 2887
RSK SALLY ANN	BIEBER SIERRA 3560
LFRA MISS SALLY G330	RED ROCKET R210
	W E LARSON

Spring EPDs

BW	2.8
WW	23
YW	50
Milk	17
TM	29
Stay	8
Marb	0.10
REA	-0.06
Fat	0.00

BW 82 lbs./BR 113; WW 520 lbs./WR 100

RSK Miss Annie goes back to Bieber Impact and Glacier Chateau. **Annie was pasture exposed to Andras Champ 9018 to calve late spring.** Champ 9018 is a real growth bull in the top 11% of the breed in WW, TM, REA, top 6% for Y.G., top 1% FAT, top 16% YW and 14% C.W. He scanned a 17.56 REA. This cow and mating should work well in any herd.

35**HASLAG CATTLE COMPANY — Waylon Haslag**
Bonnots Mill, MO – 573-690-4491

Cow/Calf Pair

WJHC AGNES T409

Reg. #: 1155683 — Calved: 04/20/2007 — Tattoo: T409 WJHC — 1A 100.0%

LCC HEAVEN OR BUST1000B	LEACHMAN HEAVENLY 8141
JHL A012M	LMAN MARY 9003
LCHMN MINIATA D1091	LEACHMAN RED TOP 8658
	LEACHMAN MINATA 6531
JR HOLDEN SPOTLIGHT 143	HOLDEN HIGHLIGHT 807
JDRA AGNES 406	BIEBER BANA 4466
JDRA AGNES 266	DAHLKE LOGAN 100F
	SODAK 5108

Spring EPDs

BW	-0.6
WW	24
YW	49
Milk	20
TM	32
Stay	5
Marb	-0.01
REA	0.06
Fat	0.00

BW 80 lbs./BR 100; WW 627 lbs./WR 100; YW 751 lbs./YR 100

A stylish cow who raises thick calves, Agnes T409 is genetically stacked with HEAVEN OR BUST, LARSON RED LIGHTNING, and GLACIER LOGAN in her pedigree. **Bred to calve by sale day to RRA MARIO 879 (#1243512)** who goes back to Glacier Marias, the Bloxy and Minola cow lines, and Cherokee Canyon. This should be an outstanding calf.



BJR Tilly 677-777
Dam of Lot 38 and
Granddam of Lot 39

Udder pictured at age 14



36

Cow/Calf Pair

OZARK CATTLE COMPANY – Quinton Cooper
Dunnegan, MO – 417-276-5386, home • 417-459-5455, cell

HUST BC 3109 NANA 1326L

Reg. #: 814075 — Calved: 04/06/2001 — Tattoo: 1326L HUS — 1A 100.0%

LEACHMAN CHIEFDOM 2X LEACHMAN KINGDOM 8251
HUST CHIEFDOM 3109 LEACHMAN RD REV 5901
 HUST MS 7114-0442 SC 7114
 BBCC MISS BLACKBIRD 34
 HUST B C 0323 S C K392 BARTIE C
HUST 2939 0323 6910 MARVEEN 755
 HUS DAPHNIE HR 2939 LEACHMAN FIRE 'N ICE
 DAPHNIE'S GOLD

Spring EPDs	
BW	0.2
WW	27
YW	43
Milk	14
TM	27
Stay	5
Marb	0.10
REA	-0.11
Fat	-0.01

BW 70 lbs./BR 96; WW 537 lbs./WR 101; YW 803 lbs./YR 99

An older cow that has worked well for us. Still a great producer and we have retained her daughters in our herd. **Sells with a 3/4**

RA, 1/4 SM heifer calf born 3/5/11 out of our Buffalo Creek Simmental X Red Angus bull. Her daughter from last spring sells as Lot 66.

37

Cow/Calf Pair

OZARK CATTLE COMPANY – Quinton Cooper
Dunnegan, MO – 417-276-5386, home • 417-459-5455, cell

OGF ANN 214M

Reg. #: 871388 — Calved: 04/01/2002 — Tattoo: 214M OGF — 1A 100.0%

GLACIER EXPLORER 740 LEACHMAN ROBUST 7222
GLACIER TRAIL 940 GLACIER FAYET
 GLACIER VERDALE 735 GLACIER MARIAS 548
 GLACIER VERDALE 361
 RIGGINS 007 LMAN ROBIN HOOD 1174B
OGF ANNA J954 HUST MINERVNO G 4598
 OGF MONU ANNA 582 RR'S MONU 2X 3-60
 OGF ANNA Y143

Spring EPDs	
BW	3.0
WW	31
YW	56
Milk	24
TM	39
Stay	7
Marb	0.09
REA	-0.12
Fat	0.00

BW 80 lbs./BR 106; WW 589 lbs./WR 98

A great producing cow that we have kept several heifers out of. **Sells with a red white-faced 3/4 RA, 1/4 SM bull calf born 3/11/11 out of a halfblood bull with Buffalo Creek Breeding.** Her 2010 daughter sells as Lot 65.



Star G Tilly U88 • Lot 39

38

STAR G RANCH – Kyle Gilchrist
Douds, IA – 641-919-1077

Cow/Calf Pair

STAR G TILLY P415

Reg. #: 961870 — Calved: 03/14/2004 – Tattoo: P415 STRG — 1A 100.0%

LEACHMAN END CUT 1383G
BADLANDS CUT ABOVE 012
BADLANDS CEDAR 624

LCHMN NONE HEAVIER1127D
PARK VICTORIA C233
BJR JR 107
BIEBER ELEANOR 3338

BJR RAMBLER 5162
BJR TILLY 677-777
BJR TILLY 2258-2101

FCC RAMBO 502
BJR GOLDI 355-1122
BJR HI PRICE 360-86M
BJR TILLY 862-621

Spring EPDs	
BW	2.3
WW	32
YW	59
Milk	20
TM	36
Stay	9
Marb	-0.07
REA	-0.18
Fat	0.02

BW 86 lbs./BR ; WW 583 lbs./WR ; YW 895 lbs./YR

Star G Tilly P415 is a phenomenal BJR Tilly 677-777 daughter whose dam lead the Star G Ranch Donor Program with a 107 MPPA and produced embryos through her mid teens. The Tilly's have been our very best uddered females and P415 is as near perfect as they come. **Sells with Y114 bull calf born 3/24/11 78 lbs., sired by our exciting PIE Get R Done X Tidy Bee herdsire – ATKN HHF Wasabi (#1310609) who posts EPDS of: B 1.0 W 44 Y 78 M 17 TM 39 REA .30.** Expect great things from this exciting cow calf pair.

39

STAR G RANCH – Kyle Gilchrist
Douds, IA – 641-919-1077

Cow/Calf Pair

STAR G TILLY U88

Reg. #: 1267525 — Calved: 03/16/2008 – Tattoo: U88 STRG — 1A 100.0%

GLACIER CHATEAU 744
PERKS CHATEAU 309R
PERKS MISS RAMBO 8105

LMAN KING ROB 8621
GLACIER REBALA
4L RAMBO R621
PJMC MS GOLDEN BOY 305

LCHMN ON TARGET 1016E
STAR G TILLY P425
BJR TILLY 677-777

LMAN ROBIN HOOD 1174B
LCHMN BLOXY C1176
BJR RAMBLER 5162
BJR TILLY 2258-2101

Spring EPDs	
BW	1.8
WW	36
YW	67
Milk	15
TM	33
Stay	6
Marb	0.01
REA	0.03
Fat	0.00

BW 85 lbs./BR 100; WW 628 lbs./WR 100; YW 896 lbs./YR 100

Star G Tilly U88 is another of our super uddered Tilly females by the legendary Perks Chateau 309R bull that was the NAILE Grand Champion Bull in Louisville in 2005. Her On Target dam sells as Lot 40 and goes back to the 107 MPPA power house – BJR Tilly 677-777 Donor Matron. If you like a combination of growth and power with excellent udder design, you will appreciate this 3 year old coming into the prime of her life. **Sells with bull calf Y113 born 3/18/11, 83 lbs., sired by ATKN HHF Wasabi (#1310609).**



LSF RR Pride T7800 • Lot 42

40
Cow/Calf Pair

STAR G RANCH – Kyle Gilchrist
Douds, IA – 641-919-1077

STAR G TILLY P425

Reg. #: 961878 — Calved: 03/18/2004 — Tattoo: P425 STRG — 1A 100.0%

LCHMN ON TARGET 1016E	LMAN ROBIN HOOD 1174B	LMAN KING ROB 8621
	LCMHN BLOXY C1176	LEACHMAN PRILARK
		LEACHMAN HEAVENLY 8141
		LMAN BLOXY 9038
BJR TILLY 677-777	BJR RAMBLER 5162	FCC RAMBO 502
	BJR TILLY 2258-2101	BJR GOLDI 355-1122
		BJR HI PRICE 360-86M
		BJR TILLY 862-621

Spring EPDs	
BW	2.7
WW	30
YW	58
Milk	21
TM	36
Stay	5
Marb	0.07
REA	-0.13
Fat	-0.01

BW 105 lbs./BR ; WW 656 lbs./ WR ; YW 1127 lbs./YR

Tilly P425 is the powerhouse of the Tilly cows offered in this auction with an individual performance record of 656 lb WW and 1127 lb YW. She is a large statured cow with tremendous thickness, muscling and the exceptional Tilly udder design. **Should calve in early May to ATK HHF Wasabi (#1310609).** Parental Estimated EPDs: B 1.3 W 37 Y 68 M 19 TM 38

41
Cow/Calf Pair

STAR G RANCH – Kyle Gilchrist
Douds, IA – 641-919-1077

WEBR HAILEY 864 [OSF]

Reg. #: 1254694 — Calved: 03/14/2008 — Tattoo: 864 WEBR — 1A 100.0%

3SCC HIGH GRADE S05	UBAR GRAND PRIX 102	LCHMN GRANDCANYON 1244G
	K F GAMMER 340	FORSTER COPPRQUEEN 7168
		N BAR EMULATION EXT
		BON VIEW GAMMER 2409
WEBR MS DOLLY 2S	MLK CRK CUB 722	GLACIER CUB 446
	WEBR MS DOLLY 1L	MLK CRK LAKOTA 152-HOBO
		BADLANDS MR BEEF 805
		LMAN SELMA 9192

Spring EPDs	
BW	-2.6
WW	16
YW	38
Milk	15
TM	23
Stay	5
Marb	-0.06
REA	-0.02
Fat	-0.01

BW 68 lbs./BR 100; WW 679 lbs./WR 100

A grand daughter of the Ms Dolly 1L cow that has produced division winners across the U.S. for Jesse Weber of Minnesota, 864 can crank out the power to win bull tests from her calves with enough **class to win some of the big shows. Sells with Y108 bull calf born 3/07/11 85 lbs sired by Jacobson Mully 8105 (#1262755).** Hailey 864 is Tested OS Free and contains some of the breeds greats including past National Grand Champion Bull -- UBAR Grand Prix 102. This lot offers a sensational young cow with a promising bull calf at side.



OLC Cashmere S15 • Lot 43

42

ROGERS RANCH RED ANGUS – Raymond, Steven, & Nathan Rogers
Princeton, MO – 660-748-6350, Nathan • 660-654-1591, Steven

Cow/Calf Pair

LSF RR PRIDE T7800

Reg. #: 1161073 — Calved: 02/16/2007 – Tattoo: T7800 RRSO — 1A 100.0%

BECKTON LANCER F442 T
LCC LEGACY B058M
LCC ELEANOR K1022

BECKTON LANCER T A664
BKT SUFFEINA A828 DM
LMAN ROBIN HOOD 1174B
LCHMN ELEANOR H1755

LCHMN GRANDCANYON 1244G
RRSO MA191
DCHS PRIDE 7159

BUF CRK CHF 824-1658
KRN REBA'S ROBIN
DFR HEAVENLY 05ZA
ECHO DCHS PRD M04

Spring EPDs	
BW	-1.5
WW	28
YW	55
Milk	14
TM	28
Stay	6
Marb	0.04
REA	0.14
Fat	0.01

BW 70 lbs./BR 93; WW 686 lbs./WR 105; YW 858 lbs./YR 104

T7800 was Steven's pick at the 2008 Ludgivson Focus on Females sale. She has raised two keeper bulls for us already. T7800 has one of those stacked pedigrees: Lancer F442, Robin Hood, Grand Canyon, and Eleanor. A moderate framed, young cow that is hitting her stride in the pasture. **Selling with a 72# birthweight heifer calf born 3/11/11 sired by the cow-maker BJR JR 107 (#411396).**

43

ROGERS RANCH RED ANGUS – Raymond, Steven, & Nathan Rogers
Princeton, MO – 660-748-6350, Nathan • 660-654-1591, Steven

Cow/Calf Pair

OLC CAHSMERE S15

Reg. #: 1088752 — Calved: 01/04/2006 — Tattoo: S15 SOLC — 1A 100.0%

LMAN KING ROB 8621
OLC KING ROB K851
BJR VERNICE 388-1438

LEACHMAN ROBUST 7222
LEACHMAN ELEANOR
BJR CENTENNIAL 800
BUF CRK VERNICE 1438

LMAN KING ROB 8621
OLC CASHMERE K344
PIE CASHMERE 402

LEACHMAN ROBUST 7222
LEACHMAN ELEANOR
PIE CASH
BJR BONNE BEL 9S-380

Spring EPDs	
BW	0.3
WW	30
YW	68
Milk	26
TM	41
Stay	6
Marb	-0.06
REA	0.06
Fat	-0.01

BW 74 lbs./BR 99; WW 644 lbs./WR 111

OLC Cashmere S15 is a double-bred KING ROB cow going back to the Vernice and BonneBell cow lines. A deep made cow with a picture perfect udder and solid EPDs **She is due to calve by sale date to a son of the Simmental show bull STAR POWER;** should be a show-type calf prospect for the Missouri State Fair Steer or Market Heifer shows!



LMAN King Rob 8621 • Semen sells as Lot 44

44
Semen

MILLER CATTLE COMPANY — Chuck Miller
Columbia, MO – 573-474-1768, home • 573-881-3589, cell

LMAN KING ROB 8621 [MAF,OSF]

Reg. #: 335067 — Calved: 02/16/1990 — Tattoo: 8621 LBC — 1A 100.0%

RCN DYNAMO 614	JHL DYNAMO 417
LEACHMAN ROBUST 7222	RCN INDIGO-B4018
LEACHMAN DUCHESS6463	LEACHMAN PRF-R012
	LEACHMAN DUCHESS1631
JTL 9004 KING KONG	PBC D0202 6M H3554
LEACHMAN ELEANOR	WIX 425 5004C
PRF ELEANOR L015	PBC D0202 6M H0904
	PBC C0949 6F F1612

Spring EPDs	
BW	1.4
WW	40
YW	88
Milk	23
TM	43
Stay	11
Marb	-0.23
REA	0.10
Fat	0.01

BW 90 lbs./BR 106; WW 586 lbs./WR 118; YW 1257 lbs./YR 127

HELLO! That's right, here's your chance to utilize the "King of Blow & Go" in your herd. This semen is hard to find and even harder to part with. **We are offering 10 straws of King Rob semen**, one of the greatest bulls of the Red Angus breed whose progeny are still in demand.

45
Spring Bred
Heifer

OZARK CATTLE COMPANY – Quinton Cooper
Dunnegan, MO – 417-276-5386, home • 417-459-5455, cell

DJN LADY 1345

Reg. #: 1342135 — Calved: 01/27/2009 — Tattoo: 1345 DJN — 1A 100.0%

LARSON RED LIGHTNING	LMN IMPRESSIVE ROB1095B
CCF LIGHTNING 0011 ET	LARSON CRIS 926
BJR EMILY 041-917	BJR RAM 041
	BJR EMILY 502-4278
CEE GLACIER KING 9898	GLACIER MARIAS 548
DJN LADY 947	J BAR K KATY FAVORITE
DJN LADY	ROCKY TOP
	NEELYS SPRING LADY

Spring EPDs	
BW	0.7
WW	25
YW	46
Milk	17
TM	30
Stay	8
Marb	-0.01
REA	-0.07
Fat	-0.02

BW 75 lbs./BR 102; WW 628 lbs./WR 101

DJN Lady 1345 is a moderate framed female with correct conformation. Her individual performance is terrific with a birthweight of 75 lbs. and a weaning weight of 628 lbs on no creep. Her solid pedigree stacks udder and teat quality, low maintenance, high performance, low birth weight and carcass quality. **Pasture exposed to calve late spring to MONTVUE M375 LANCER S207 (#1129289).**

**46****OZARK CATTLE COMPANY – Quinton Cooper**
Dunnegan, MO – 417-276-5386, home • 417-459-5455, cellSpring Bred
Heifer**SHAWNDALE ARIZONA**

Reg. #: 1347118 — Calved: 04/21/2009 — Tattoo: 4 SDFJ — 1A 100.0%

LMAN KING O MAT 1534D	LMAN KING ROB 8621
SHAWNDALE KING MATT	BJR MATTIE 002-1102
SHAWNDALE ALLIE	BWD-JKG DOUDS ALLIANCE
	HUST BC R1 4454
TASSEL ROBIN HOOD 78E	LMAN ROBIN HOOD 1174B
SHAWNDALE SADONA	TASSEL LANA 15A
BCC MS SHADOW 104E	SHFM SHADOW B3
	JRSF MS R RULER 905B

Spring EPDs

BW	2.1
WW	36
YW	65
Milk	24
TM	42
Stay	5
Marb	-0.14
REA	0.18
Fat	-0.01

BW 68 lbs./BR 99; WW 545 lbs./WR 102

With a pedigree tracing back to KING ROB, BJR MATTIE, and ROBIN HOOD, Arizona ranks in the top 5% of the breed for TM and the top 6% for Milk. **Bred to calve late spring to MONTVUE M375 LANCER S207 (112989).**

**47****NOLIN RED ANGUS – Mike Nolin & Jessica Nolin Barnett**
Monroe, IA – 641-793-2976, home • 641-521-5039, cellFall Bred
Female**JSN CLARRISA**

Reg. #: 953420 — Calved: 02/01/2004 — Tattoo: 199 JSN — 1A 100.0%

RED WILD ROSE ROBINHOOD 11F	LMAN ROBIN HOOD 1174B
RED NORTHLINE ROB ROY 122K	SSS GOLD EDGE 363X
RED BAR EL SYBIL 122E	RED MIQUELON BUTCH 9B
	RED MAPLE ACRES MARTA 13A
JSN RED DAWN	LARSON RED SKY 539
NOLIN'S FREE BIRD	JRA JAMES 2236
JRA JAMES 2162	FJL MAIN EVENT 874J
	JRA JAMES 1394

Spring EPDs

BW	2.7
WW	32
YW	72
Milk	22
TM	38
Stay	6
Marb	-0.06
REA	-0.02
Fat	0.00

BW 85 lbs./BR 108; WW 580 lbs./WR 94; YW 833 lbs./YR 103

A ROB ROY daughter whose dam and granddam were Iowa State Fair open class champions. This is your chance to raise your own show heifers! ROB ROY was the Red/Black Show Bull of the Year in Canada. We are keeping Clarrisa's 2010 heifer in our herd. **Bred to Red Hills 17P Julian 101S (#1147667)** whose first calves were Reserve Division champions at Des Moines last summer. Pasture exposed 12/1/10 to 3/10/11.

**48****SPREUTELS FARM — Wilbur & Elsie Spreutels**
Koshkonong, MO – 417-867-5695, home • 417-280-2552, cellFall Bred
Female**WES ML BARB U78**

Reg. #: 1297895 — Calved: 09/03/2008 — Tattoo: U78 SPRE — 1A 100.0%

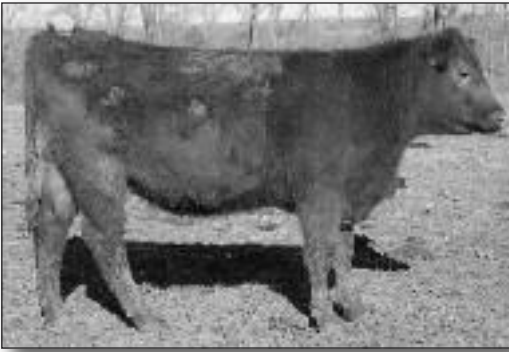
LCC MAJOR LEAGUE A502M	BFCK CHEROKEE CNYN 4912
WES MAJOR DOM S11	KRN REBA'S ROBIN
JSN 63	LMAN DOMINANT 1061B
	JRA JAMES 2477
LCC MAJOR LEAGUE A502M	BFCK CHEROKEE CNYN 4912
WES LADY LEAGUE R43	KRN REBA'S ROBIN
WES C LADY	WE CRUCANYON H06
	HUST 6910 LM 8028

Spring EPDs

BW	-1.6
WW	30
YW	50
Milk	16
TM	31
Stay	7
Marb	0.18
REA	0.06
Fat	-0.02

BW 64 lbs./BR 89; WW 461 lbs./WR 92; YW 629 lbs./YR 88

Sired by our WES MAJOR DOM, who is out of a Nolin cow, U78 has solid EPDs. Her MAJOR LEAGUE dam is still in our herd and has moderate birth weight calves. That's right, U78 is double-bred MAJOR LEAGUE! **Pasture exposed to WES SHERLOCK T58 (#1224204) from 11/22/10 to 2/15/11.**



WES Goldway W45 • Lot 51

49

*Fall Bred
Female*

SPREUTELS FARM — Wilbur & Elsie Spreutels
Koshkonong, MO – 417-867-5695, home • 417-280-2552, cell

WES RUBY ANN U81

Reg. #: 1297910 — Calved: 09/03/2008 — Tattoo: U81 SPRE — 1A 100.0%

BECKTON LANCER F442 T BECKTON LANCER T A664
LJC JAVELIN M08 BKT SUFFEINA A828 DM
LJC LOGAN E56 945 GLACIER LOGAN 210
 BUCKEYE CHARLOTTE

LMAN KING O MAT 1534D LMAN KING ROB 8621
TRAF RUBY ANN 070 BJR MATTIE 002-1102
JRA JAMES 2267 JRA SCUD
 JKG J BAR K QUEEN

Spring EPDs	
BW	0.0
WW	36
YW	65
Milk	11
TM	29
Stay	12
Marb	0.12
REA	0.27
Fat	-0.02

BW 70 lbs./BR 93; WW 443 lbs./WR 99; YW 615 lbs./YR 95

Ruby Ann U81's sire, LJC JAVELIN, need no introduction! With KING ROB and a James cow on her dam's side, there are great carcass numbers in this whole pedigree! A half-sister to Lots 4 & 5, **she is pasture exposed to WES SHERLOCK T58 (1224204) from 11/22/10 to 2/15/11.** Ultrasound shows a bull calf on the way.

50

*Fall Bred
Female*

SPREUTELS FARM — Wilbur & Elsie Spreutels
Koshkonong, MO – 417-867-5695, home • 417-280-2552, cell

WES ALICIA W01

Reg. #: 1323199 — Calved: 03/04/2009 — Tattoo: W01 SPRE — 1A 100.0%

MESSMER JOSHUA 019P BECKTON JULIAN GG B571
MESSMER PACKER S008 MESSMER PANDORA M186
MESSMER MILLIE 124P VGW TOP PICK 130
 MESSMER MILLIE 9416

HUS 7288 JEK MR BARTS SILAS
WES BARLEE ANN J126 DMS MS FORTUNE 9064
LEACHMAN BARLEE 5670 LEACHMAN SOLID GOLD
 LEACHMAN BARLEE 3761

Spring EPDs	
BW	0.3
WW	26
YW	50
Milk	16
TM	29
Stay	10
Marb	0.14
REA	0.21
Fat	-0.01

BW 80 lbs./BR 103; WW 534 lbs./WR 100; YW 678 lbs./YR 107

This MESSMER PACKER daughter is out of an 11 year old cow with her 10th calf at side. Darn good EPDs in this package. **Pasture exposed to WES SHERLOCK T58 (1224204) from 11/22/10 to 2/15/11.** Ultrasound shows a heifer calf coming!



WES Keebo W50 • Lot 52

51

Fall Bred
Female

SPREUTELS FARM — Wilbur & Elsie Spreutels
Koshkonong, MO – 417-867-5695, home • 417-280-2552, cell

WES GOLDWAY W45

Reg. #: 1323238 — Calved: 04/21/2009 — Tattoo: W45 SPRE — 1A 100.0%

CHIEF ORY MONU M25	BJR MONU 4X-303	Spring EPDs
WES HEAVY GOLD P53	ORY'S OZARK ABBY C36Y	
MUSHRUSH ATHENA 1146	RED ROBIN 3004	
	ATHENA 3519	
WE CRUCANYON H06	BUF CRK CHF 824-1658	BW 1.3
WES IOWA C S09	MS NEO-SHO CRUSADER E52	WW 32
MGN IOWA ELON	JSN GATEWAY 107	YW 60
	SS MISS ROB	Milk 14
		TM 30
		Stay 6
		Marb -0.47
		REA -0.12
		Fat -0.02

BW 74 lbs./BR 94; WW 514 lbs./WR 92; YW 651 lbs./YR 98

With Mushrush & Ory breeding on top and Nolin & Neo-Sho breeding on the bottom, this should be one dependable, functional cow! **Pasture exposed to WES SHERLOCK T58**

(#1224204) from 11/22/10 to 2/15/11. Expect above average growth EPDs on this mating.

52

Fall Bred
Female

SPREUTELS FARM — Wilbur & Elsie Spreutels
Koshkonong, MO – 417-867-5695, home • 417-280-2552, cell

WES KEEBO W50

Reg. #: 1323216 — Calved: 05/12/2009 — Tattoo: W50 SPRE — 1A 100.0%

WES CHEROKEE N31	BFCK CHEROKEE CNYN 4912	Spring EPDs
WES CC HEATH R66	MUSHRUSH VALLEY GIRL 1	
WES RED SUGAR	HUS 7288	
	MISS SUGAR CREEK 195	
RED RAMBO K03	SC T-BONE 7104	BW 1.7
WES BONNIEBELL N21	HUST LM RM 8007	WW 21
BMZ COPPER LASS 123D	LMAN BIG CHILL 8774	YW 42
	L-BELL EVERPRIDE 110	Milk 12
		TM 23
		Stay 10
		Marb -0.18
		REA -0.08
		Fat -0.01

BW 74 lbs./BR 90; WW 505 lbs./WR 96; YW 587 lbs./YR 93

A solid heifer sired by a strong CHEROKEE CANYON grandson. Keebo W50's dam has been a regular calver since 2005 and traces back to one of our original registered Red Angus Cows. **Pasture exposed to WES SHERLOCK T58 (#1224204) from 11/22/10 to 2/15/11.**



HXC Conquest 4405P • Service Sire to Lots 53-55

53

Fall Bred
Female

SAND RIDGE ANGUS – Raymond & Joyce Pace
Tecumseh, MO – 417-679-4162, home • 417-989-0962, cell

JP SUZANNA

Reg. #: 1352795 — Calved: 09/11/2009 — Tattoo: W14 PACE — 1A 100.0%

WES MIMEX R07
BIEBER MAKE MIMI 7249
WES HONARY P36

BOLA MIA S335
BROWN VACATION H7106
JEFFRIES MILDRED M84

BJR MAKE MY DAY 981
BIEBER SIRENA 6708
EXCELLENT HOOD L14
HUS 33 HILLARY 0139K

BECKTON JULIAN GG B571
LCHMN FLOWER C1161
LCHMN NO EQUAL 1174D
JEFF MS JAYLA 6181J

Spring EPDs

BW	-0.2
WW	35
YW	67
Milk	17
TM	34
Stay	10
Marb	0.06
REA	-0.04
Fat	-0.01

BW 68 lbs./BR 98; WW 458 lbs./WR 97

This long-made heifer is a top choice with her bloodline. Her dam is a Brown Vacation daughter from BOLA Red Angus of Texas and her sire is a Bieber Make Mimi son. **She is bred to HXC Conquest 4405P (975924).** You can count on calving ease with Conquest – his EPDs include top 4% CED, top 7% BW, TM of 33, MARB of 0.12 and REA of 0.29. YOUR Conquest calf is due October 1st, 2011!

54

Fall Bred
Female

SAND RIDGE ANGUS – Raymond & Joyce Pace
Tecumseh, MO – 417-679-4162, home • 417-989-0962, cell

WES PANSY U70 [OSF]

Reg. #: 1297894 — Calved: 08/27/2008 — Tattoo: U70 SPRE — 1A 100.0%

WES MAJOR DOM S11
LCC MAJOR LEAGUE A502M
JSN 63

WES SWEET LARK R55
WES STRIKE PATRICK N01
WES KINGLY SUGAR M27

BFCK CHEROKEE CNYN 4912
KRN REBA'S ROBIN
LMAN DOMINANT 1061B
JRA JAMES 2477

LARSON RED LIGHTNING
CHILL CHINOOK LADY 125D
LCC SOUTHERN KING 1765K
MISS SUGAR CREEK 195

Spring EPDs

BW	-0.2
WW	28
YW	49
Milk	19
TM	33
Stay	5
Marb	0.12
REA	0.10
Fat	-0.02

BW 58 lbs./BR 81; WW 485 lbs./WR 93; YW 611 lbs./YR 94

Top breeding here – Major League and Red Lightning in her pedigree. Her paternal granddam is out of the Mike Nolin herd. U70 has been tested OSF. **She is bred to HXC Conquest**, one of the most talked about bulls in the industry. Due to calve October 1st, you can look forward to easy calving and an exceptional Conquest calf.

55SAND RIDGE ANGUS – Raymond & Joyce Pace
Tecumseh, MO – 417-679-4162, home • 417-989-0962, cellFall Bred
Female**JP SAYLOR**

Reg. #: 1352796 — Calved: 10/11/2009 — Tattoo: W15 PACE — 1A 100.0%

WES MIMEX R07
BIEBER MAKE MIMI 7249
WES HONARY P36BJR MAKE MY DAY 981
BIEBER SIRENA 6708
EXCELLENT HOOD L14
HUS 33 HILLARY 0139K**LCF SHAWNEE 163S**
BROWN GOOD ONE N7465
AMANDABFCK CHEROKEE CNYN 4912
BROWN MS ABIGRACE L7730
KS GRANITE 541
HARNONY LASS 614

BW 71 lbs./BR 102; WW 488 lbs./WR 103

This heifer will catch your eye! She has a strong frame and excellent pedigree. Her dam is from Little Creek Farms in Mississippi and is a fantastic BROWN GOOD ONE daughter. Saylor's sire is a direct son of MAKE MIMI. **She is also bred to HXC Conquest**, the calving ease specialist from Accelerated Genetics whose 489 registered calves average a 604# WW. Due October 1.

Spring EPDs

BW	-0.1
WW	33
YW	62
Milk	19
TM	36
Stay	7
Marb	-0.03
REA	0.11
Fat	-0.02

56HASLAG CATTLE COMPANY — Waylon Haslag
Bonnots Mill, MO – 573-690-4491Fall Bred
Female**JDRA AGNES 406**

Reg. #: 959246 — Calved: 02/12/2004 — Tattoo: 406 JDRA — 1A 100.0%

JR HOLDEN SPOTLIGHT 143
HOLDEN HIGHLIGHT 807
BIEBER BANA 4466LARSON RED LIGHTNING
HOLDEN FIRESTORM 591
BIEBER DESIGN 1325-082
BIEBER BANA 3881**JDRA AGNES 266**
DAHLKE LOGAN 100F
SODAK 5108GLACIER LOGAN 210
LMG BRANDY 22
SODAK OSCAR 3387
SODAK OSC 3060

WW 563 lbs./WR 96

A great cow that has raised many heavy muscled, structurally correct bulls for us over the years. Her daughter sells as a cow/calf pair. **Pasture exposed to Mushrush QUANTUM W117 (1320938) from 12/30/11 to 2/14/11.**

Spring EPDs

BW	0.2
WW	18
YW	40
Milk	22
TM	31
Stay	8
Marb	0.06
REA	0.19
Fat	0.02

57HASLAG CATTLE COMPANY — Waylon Haslag
Bonnots Mill, MO – 573-690-4491Fall Bred
Female**OLC PENELOPE R250**

Reg. #: 1048376 — Calved: 02/18/2005 — Tattoo: R250 SOLC — 2 100.0%

OLC PAY DAY N127
LCHMN PAY DAY 1465J
OLC LARKABA L62BJR MAKE MY DAY 981
GMRA VICELIA 744
LMAN ROBIN HOOD 1174B
BECKTON LARKABA G338 HR**LMB ST PENELOPE 250**
LMB ELWAY 938
ST PENELOPE 538SIE ELWAY 1570
LMB ST MONA 740
LEACHMAN EMULOUS4770
LMB ST PENELOPE 380

BW 70 lbs./BR 96; WW 640 lbs./WR 99; YW 872 lbs./YR 100

A taller, long-made cow whose calves have lots of growth. Penelope R250 goes back to breed cornerstones, MAKE MY DAY and LMB ELWAY. **Pasture exposed to Mushrush QUANTUM W117 (1320938) from 12/30/11 to 2/14/11.**

Spring EPDs

BW	1.5
WW	40
YW	58
Milk	12
TM	32
Stay	5
Marb	-0.12
REA	0.12
Fat	-0.02



RRA Miss Heavenly 21L 860 • Lot 58

58

Fall Bred
Female

HASLAG CATTLE COMPANY — Waylon Haslag
Bonnots Mill, MO – 573-690-4491

RRA MIISS HEAVENLY 21L 860

Reg. #: 1243438 — Calved: 01/29/2008 — Tattoo: 860 RRA — 2 100.0%

LCC MARIO 1889J
LSF SUPER MARIO 6092S
LCC MINOLA K1279

LEACHMAN HEAVENLY 8141
DFR MISS HEAVENLY 021L
DOUBLE FORK 033E

GLACIER MARIAS 548
LEACHMAN ELEANOR
LEACHMAN EBV 6703
LCHMN MINOLA H1032

LCHMN MDLD HVYWT2463
LEACHMAN DINA 7011
RKA UMPIRE 005
MS CHF JOSEPH 024U

Spring EPDs

BW	1.3
WW	45
YW	92
Milk	19
TM	41
Stay	4
Marb	0.12
REA	-0.07
Fat	0.01

BW 85 lbs./BR 100; WW 581 lbs./WR 100; YW 825 lbs./YR 118

A thick-made, well-structured granddaughter of LCC MARIO. Hard to beat the growth potential here with her YW EPD in the top 2% and WW in the top 7% of the breed. **Pasture exposed to**

Mushrush QUANTUM W117 (1320938) from 12/30/11 to 2/14/11.

Commercial Females Lots 59-86

SPREUTELS FARM — Wilbur & Elsie Spreutels

Koshkonong, MO – 417-867-5695, home; 417-280-2552, cell

These solid colored heifers with traceable ancestry in our herd have a little more age and should calve easily. We have won Gridmaster four years on feedlot cattle fed on our place with the same genetic background as these ladies. The service sire is WES Sherlock T58 (1224304). Exposed from 11/22/10 to 2/15/11.

Lot 59: DOB: 9/16/08. Sired by WES CHEROKEE N31, this 78# BW heifer is a CHEROKEE CANYON granddaughter. Ultrasound indicates a bull calf on the way.

Lot 60: DOB: 9/28/08. Sired by WES CC HEATH R66, this heifer also goes back to the legendary CHEROKEE CANYON. Ultrasound indicates a bull calf coming.

Lot 61: DOB: 10/8/08. Sired by WES Heavy Gold P53, this 70# BW heifer has a bull calf on the way.

Lot 62: DOB: 3/14/09. This 72# BW heifer is out of the Genex calving-ease specialist sire, Beckton Hustler S436 C2.

Lot 63: DOB: 3/31/09. Out of WES REVELER S69, a MAJOR LEAGUE son, this heifer had a 70# BW. Ultrasound shows a heifer calf on the way.

Lot 64: DOB: 4/4/09. Another WES Heavy Gold P53 daughter, with an 82# BW.

Commercial Females

Lots 59-86

OZARK CATTLE COMPANY – Quinton Cooper

Dunnegan, MO – 417-276-5386, home • 417-459-5455, cell

Lot 65 – DOB: 2/21/09. Out of SJR Tigers Woody (1054301) and the Lot 37 cow, this full blood heifer is bred to MontVue M375 Lancer S207 for a late spring calf.

Lot 66 – DOB: 3/19/09. Another daughter of SJR Tigers Woody, going back to Ory's Tiger Woods and Holden HI HO, this heifer is out of the Lot 36 cow. Bred to MontVue M374 Lancer S207 for a late spring calf.

STAR G RANCH – Kyle Gilchrist

Douds, IA – 641-919-1077

Lots 67-69 – 3 open Red Angus full blood heifers. I will offer semen on the 3 new herd sires purchased by the Star G Ranch this spring.

ROGERS RANCH RED ANGUS

Raymond, Steven, & Nathan Rogers

Princeton, MO – 660-748-6350, Nathan • 660-654-1591, Steven

Lot 70 – DOB: 3/25/10. A dark red heifer out of a top milking Gelbvieh cow and our Batterson 13S Red Angus herdsire. 78# birthweight. Half sisters to these Batterson 13S heifers topped last year's commercial heifer offering at this sale and these gals maybe even better.

Lot 71 – DOB: 3/9/10. Out of Batterson 13S and an awesome, perfect uddered red white-faced Simmental cow that we've used to produce half-blood bulls. This one came out as 80# heifer.

Lot 72 – DOB: 4/11/10. A 3/4 Red Angus out of our Batterson 13S herdsire that has done a great job putting females back in our herd. Her dam is a stout, thick made producer for us. Bred for calving ease with a 70# birthweight.

OZARK CATTLE COMPANY – Quinton Cooper

Dunnegan, MO – 417-276-5386, home • 417-459-5455, cell

Lots 73-80 – 8 commercial open heifers born spring 2010. We are pleased to offer 8 head of commercial Red Angus X Simmental yearling heifers that are ready to breed. These females come from the heart of our herd and many of their mothers came through this very sale in years past.

DCJ RED ANGUS – Dennis & Cheryl Jacobs

Purdin, MO – 660-244-3932

Lot 81 – This heifer was born on 04-03-10 with a birth wt. of 78#. She was sired by the King O Matt bull from Shawndale Farms and a commercial Red Angus cow from Durwood Neely's herd.

Randy Meyer, Inc. – Randy Meyer

Brunswick, MO – 660-788-2066

Lots 82-86 – 5 commercial open heifers born spring 2010. Five terrific 3/4 Red Angus heifers weighing around 850#. Gentle and ready to breed, out of dependable cows.

Sale Terms and Conditions

TERMS: Terms of the sale are cash, check, or other terms agreed to in writing between seller, buyer, and sale manager payable immediately upon conclusion of the sale before animals will be moved. Sale Manager reserves the right to require a certified check as settlement before releasing any cattle.

PURCHASER'S RISK: All animals are the owner's risk prior to their sale and become property of the purchaser as soon as declared sold by the auctioneer.

BIDDING: Any disputes or challenges regarding bids or tie bids will be settled by the auctioneer and his decision will be final.

CERTIFICATE OF REGISTRY: A certificate of registry for each animal will be transferred to the buyer at the seller's expense.

ANNOUNCEMENTS: Any errors or changes in information contained in the catalog will be announced from the block and such announcements shall take precedence over the information contained herein.

HEALTH: All animals are eligible for interstate shipment. Interstate health papers prepared by an accredited veterinarian will be furnished on each animal sold. Arrangements for International Shipment should be made with the sale manager prior to the auction. All efforts for the exportation of cattle can be arranged through the sale manager.

BREEDING GUARANTEE: All females selling as bred have been examined and preg. status indicated on health papers. Buyers have one week to retest females at their own expense. All other breeding warranties will follow guidelines set by the American Red Angus Association.

LIABILITIES: All persons who attend the sale do so at their own risk. The seller, auction facility, and sale manager assume no liability for any accidents that may occur. Neither does the seller, auction facility, or sale manager assume liability for the loss or injury to livestock due to theft, mysterious disappearance, sickness, improper handling or Act of God. It is to be clearly understood that the sale manager and its representatives act only as a medium between the buyer and the seller. They are not responsible in any way for the failure on the part of the buyer and seller to live up to their obligations or for the truth of any warranties or representation, express or implied. Neither does the sale manager assume any financial obligations to collect or enforce collection of monies between parties. Any legal action, that may in exceptional cases be taken, must be between the buyer and the seller. This catalog has been prepared by the sale Manager from pedigrees and information supplied by sources deemed reliable, however, the sale manager will in no way guarantee the pedigree, percentages of the animals selling, or data included in this catalog. Any exceptions taken are between the buyer and the seller.

CONTRACT: The above terms and conditions of sale shall constitute a contract between the buyer and seller of each animal and shall be equally binding upon both. Each sale or resale of an animal constitutes a separate transaction.

PHONE BIDS: Telephone bids will be taken by: Steven Rogers: 660-654-1592, Larry Ellison: 417-838-8772, Aaron Crosby: 417-300-1817 and Clint Berry: 417-844-1009.

Consignor's Index

Coffman Red Angus	33, 34
Rick Coffman, Douds IA	
DCJ Red Angus	26, 81
Dennis & Cheryl Jacobs, Purdin, MO	
Diamante Ranch, LLC	13, 14
Glenn & Randy Brown, Diamond, MO	
Harmony Hills Red Angus	27-30
Larry & Merrilyn Ellison, Fair Grove, MO	
Haslag Cattle Co.	35, 56, 57, 58
Waylon Haslag, Bonnots Mill, MO	
James River Farms	18, 32
Butch Stange & Aaron Crosby, Rogersville, MO	
Lamine Valley Red Angus	10-12, 19, 20, 21
Robert & Susan Felten, Pilot Grove, MO	
Miller Cattle Co.	44
Chuch Miller, Columbia, MO	
Nolin Red Angus	15, 22, 31, 47
Mike Nolin & Jessica Nolin Barnett, Monroe, IA	
Ozark Cattle Company	36, 37, 45, 46, 65, 66, 73-80
Quinton Cooper, Dunnegan, MO	
Randy Meyer Inc	82 – 86
Randy Meyer, Brunswick, MO	
Rogers Ranch Red Angus	16, 17, 23-25, 42, 43, 70-72
Raymond, Steven, & Nathan Rogers, Princeton, MO	
Rush Red Angus	3, 4, 5
Rocky, Karen, & Tyler Rush, Jasper, MO	
Sand Ridge Angus	7-9, 53, 54, 55
Raymond & Joyce Pace, Tecumseh, MO	
Spreutels Farm	48-52, 59-64
Wilbur & Elsie Spreutels, Koshkonong, MO	
Star G Ranch	6, 38, 39, 40, 41, 67-69
Kyle Gilchrist, Douds, IA	
Twyman Red Angus	1,2
Terry & Barb Twyman, Hale, MO	

EPD Averages & Ranges

Spring 2011

EPD Averages and Ranges for Proven and Opportunity Sires...

	<u>CED</u>	<u>BW</u>	<u>WW</u>	<u>YW</u>	<u>MILK</u>	<u>TM</u>	<u>ME</u>	<u>HPG</u>	<u>CEM</u>	<u>ST</u>	<u>MARB</u>	<u>REA</u>	<u>FAT</u>
Min.	-16	-8.7	-29	-26	-14	-1	-18	-5	-15	-1	-0.61	-0.77	-0.09
Ave.	6	-0.3	32	61	17	33	4	9	4	9	0.08	0.06	0.00
Max.	30	7.6	80	133	38	57	24	22	26	19	0.95	1.02	0.12

EPD Averages and Ranges for Active Dams on Inventory in 2010...

	<u>CED</u>	<u>BW</u>	<u>WW</u>	<u>YW</u>	<u>MILK</u>	<u>TM</u>	<u>ME</u>	<u>HPG</u>	<u>CEM</u>	<u>ST</u>	<u>MARB</u>	<u>REA</u>	<u>FAT</u>
Min.	-11	-9.2	-39	-52	-12	-9	-24	-4	-13	-1	-0.72	-0.83	-0.11
Ave.	5	0.1	29	55	17	31	4	9	3	9	0.05	0.02	0.00
Max.	24	10.2	69	125	43	62	38	21	17	21	1.13	1.10	0.15

EPD Averages and Ranges for Non Parents Under Two Years of Age...

	<u>CED</u>	<u>BW</u>	<u>WW</u>	<u>YW</u>	<u>MILK</u>	<u>TM</u>	<u>ME</u>	<u>HPG</u>	<u>CEM</u>	<u>ST</u>	<u>MARB</u>	<u>REA</u>	<u>FAT</u>
Min.	-10	-9.5	23	-27	-6	-1	-18	-2	-12	-1	-0.61	-0.61	-0.11
Ave.	5	-0.1	32	60	17	33	4	10	3	9	0.08	0.09	0.00
Max.	23	7.9	74	128	34	56	23	20	17	22	1.11	1.06	0.16

VITAFERM[®]

with the AMAFERM[®] advantage

Bass Livestock Nutrition, LLC

Scott Bass

300 Lon Road, Rogersville, MO 65742

Office: 417-753-3848

Mobile: 417-839-3791

Warehouse — Sales — Service — Delivery

YOUR AUTHORIZED VITAFERM DEALER

Searching for marketing avenues to deliver premiums on your Red Angus sired feeder calves?

You are invited to attend two upcoming informational meetings regarding the Red Angus Feeder Calf Certification Program. Red Angus bull customers, and/or cattlemen interested in Red Angus genetics, are invited to an interactive cattlemen's meeting at either of these two locations:

Thursday, April 21 at Joplin Regional Stockyards in Carthage, MO at 7:30 p.m.

Monday, April 18 at Whitstone Vet Clinic in Mountain Grove, MO at 7:30 p.m.
(Dr. David Gourley's vet office)

Learn how new marketing options can help deliver premiums on your Red Angus sired feeder calves and replacement heifers. The Red Angus Feeder Calf Certification Program (FCCP), the beef industry's oldest and least expensive USDA Verified Genetic/Source/Age Program can put more dollars back into your pocket. The FCCP "Yellow Tag" has been adding value to Red Angus sired calves for more than 17 years and guarantees 50% "Angus" bloodlines as well as providing access to Age & Source premiums for export products. Refreshments will be provided.



Make plans to attend and learn how Red Angus can deliver more profit to your operation!

Contact Clint Berry at (417) 844-1009 or Larry Ellison at (417) 838-8772.

There will be a Red Angus FCCP Tag sale at the Joplin Regional Stockyards on December 3, 2011. Be sure to get your calves in this sale to capture the added value of Genetic/Source verification.

Missouri Red Angus Assn.
142 Aspen Drive
Strafford, MO 65757

PRESORTED
FIRST CLASS
U.S. Postage
PAID
Manhattan, KS
Permit No. 580

Mail to:



Spring Fling Sale

April 23, 2011 • 12 p.m.
Springfield, Missouri